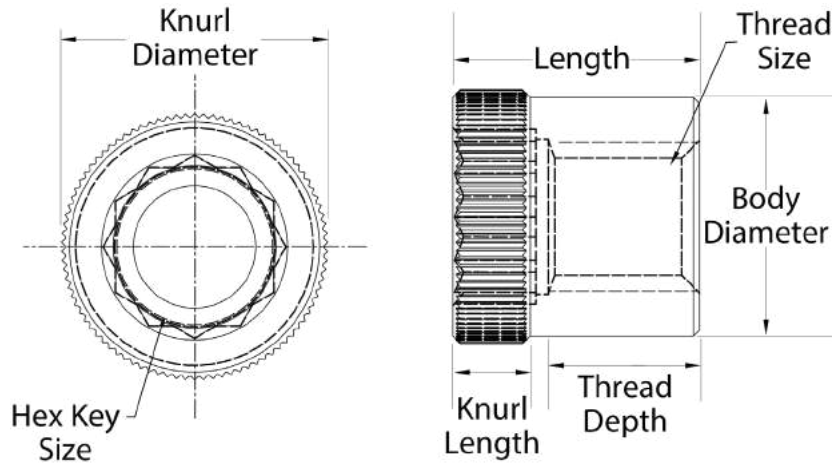


## Insert Nuts for Screws and Bolts – Metric

Also known as Allen nuts, you can use these versatile fasteners as both threaded inserts and nuts. To use as inserts, press or draw them into any nonhardened steel, cast iron, or soft nonferrous metal. You can even mold them into plastics, ceramics, fiber, and similar materials. 18-8 stainless steel inserts have excellent corrosion resistance and may be mildly magnetic. Heat Treated steel inserts have the same strength properties as ASTM A194 Grade 2H nuts - Medium Carbon Steel Quenched and Tempered. To use as nuts, tighten them with a 6-point hex key. Thread class is 6H and they are partially threaded.



### Insert Nuts for Screws and Bolts

Thread Size (mm)	Body Diameter (min, max)	Length (min, max)	Knurl Diameter (min, max)	Thread Depth	Drill Bit	Hex Key Size	Hole Size	Knurl Length (min)	18-8 SS Part Number	Steel, Black Oxide Part Number
Size - Metric										
Insert Nuts Dimensions - Inches										
M3 x 0.5	.183 - .187	.172 - .179	.205 - .209	.080	13/64	1/8	.202	.046	Z1960MSS	Z1960M
M4 x 0.7	.275 - .280	.266 - .273	.302 - .307	.125	19/64	3/16	.298	.084	Z1963MSS	Z1963M
M5 x 0.8	.302 - .307	.309 - .319	.331 - .336	.170	21/64	3/16	.327	.096	Z1964MSS	Z1964M
M6 x 1	.398 - .403	.409 - .419	.425 - .430	.225	27/64	1/4	.421	.136	Z1966MSS	Z1966M
M8 x 1.25	.493 - .498	.512 - .522	.521 - .526	.285	33/64	5/16	.516	.165	Z1968MSS	Z1968M
M10 x 1.5	.585 - .590	.606 - .621	.615 - .620	.325	39/64	3/8	.610	.195	Z1970MSS	Z1970M
M12 x 1.75	.705 - .710	.718 - .733	.738 - .743	.360	47/64	7/16	.733	.235	Z1972MSS	Z1972M
M14 x 2	.795 - .800	.821 - .836	.836 - .841	.445	53/64	1/2	.831	.265	Z1974MSS	Z1974M
M18 x 2.5	.980 - .986	.995 - 1.010	1.034 - 1.040	.500	1-1/64	5/8	1.028	.325	Z1976MSS	Z1976M
M20 x 2.5	1.152 - 1.158	1.170 - 1.185	1.209 - 1.215	.600	1-13/64	3/4	1.203	.385	Z1978MSS	Z1978M
M24 x 3	1.527 - 1.533	1.517 - 1.532	1.612 - 1.620	.810	1-9/16	1	1.605	.495	Z1979MSS	Z1979M