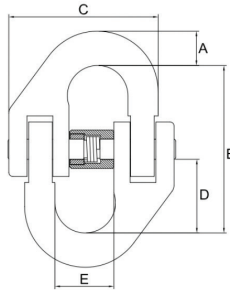


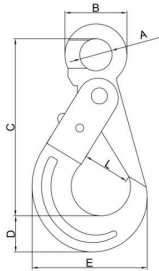


CLM Connecting Link



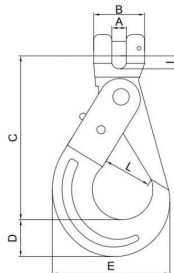
Part #	Trade Size	WLL (lbs)	Weight (lbs)	Dimensions (in)				
				A	B	C	D	E
10CLM06	7/32	2,700	0.20	0.31	1.73	1.50	0.79	0.59
10CLM08	9/32-5/16	5,700	0.40	0.45	2.20	1.97	0.98	0.79
10CLM10	3/8	8,800	0.73	0.55	2.68	2.40	1.18	0.98
10CLM13	1/2	15,000	1.44	0.73	3.23	2.99	1.42	1.18
10CLM16	5/8	22,600	2.71	0.83	4.09	3.76	1.81	1.42
10CLM20	3/4	35,300	4.85	1.02	4.92	4.29	2.17	1.73
10CLM22	7/8	42,700	7.05	1.06	5.92	5.20	2.64	1.99
10CLM26	1	59,700	12.57	1.22	6.26	6.06	2.74	2.22

ESLH Eye Self-locking Hook with Hidden Trigger



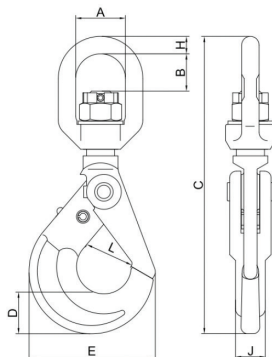
Part #	Trade Size	WLL (lbs)	Weight (lbs)	Dimensions (in)					
				A	B	C	D	E	L
10ESLH06HT	7/32	2,700	1.13	0.87	1.73	4.21	0.87	2.95	1.10
10ESLH08HT	9/32-5/16	5,700	1.94	0.94	1.81	5.24	0.98	3.39	1.30
10ESLH10HT	3/8	8,800	3.58	1.26	2.48	6.57	1.34	4.37	1.77
10ESLH13HT	1/2	15,000	7.05	1.54	3.15	8.19	1.57	5.35	2.05
10ESLH16HT	5/8	22,600	13.78	1.93	3.86	10.00	2.09	6.81	2.52
10ESLH20HT	3/4	35,300	20.94	2.32	4.49	10.71	2.52	7.87	3.03
10ESLH22HT	7/8	42,700	28.00	2.76	5.51	12.20	2.91	9.17	3.62

CSLH Clevis Self-locking Hook with Hidden Trigger



Part #	Trade Size	WLL (lbs)	Weight (lbs)	Dimensions (in)					
				A	B	C	D	E	L
10CSLH06HT	7/32	2,700	1.29	0.28	1.30	3.86	0.87	2.95	1.10
10CSLH08HT	9/32-5/16	5,700	2.05	0.35	1.54	4.72	0.98	3.39	1.30
10CSLH10HT	3/8	8,800	3.80	0.51	1.89	5.91	1.34	4.37	1.77
10CSLH13HT	1/2	15,000	7.34	0.59	2.20	7.28	1.57	5.35	2.05
10CSLH16HT	5/8	22,600	13.93	0.67	2.99	8.46	2.09	6.81	2.52
10CSLH20HT	3/4	35,300	21.38	0.91	3.19	9.25	2.52	7.87	3.03
10CSLH22HT	7/8	42,700	29.76	0.98	4.13	10.24	2.91	9.17	3.62

SSLH Swivel Self-locking Hook with Bronze Bushings & Hidden Trigger



Part #	Trade Size	WLL (lbs)	Weight (lbs)	Dimensions (in)						
				A	B	C	D	E	H	L
10SSLH06HT	7/32	2,700	1.53	1.18	0.91	7.01	0.87	2.95	0.39	1.10
10SSLH08HT	9/32-5/16	5,700	2.88	1.34	1.22	8.98	0.98	3.39	0.55	1.30
10SSLH10HT	3/8	8,800	4.85	1.65	1.57	10.83	1.34	4.37	0.63	1.77
10SSLH13HT	1/2	15,000	9.41	2.05	1.93	13.94	1.57	5.35	0.87	2.05
10SSLH16HT	5/8	22,600	17.64	2.36	1.93	16.46	2.09	6.81	0.91	2.52
10SSLH20HT	3/4	35,300	28.00	2.91	2.68	18.50	2.52	7.87	1.06	3.03
10SSLH22HT	7/8	42,700	40.00	3.90	3.90	22.56	2.91	9.17	1.30	3.62