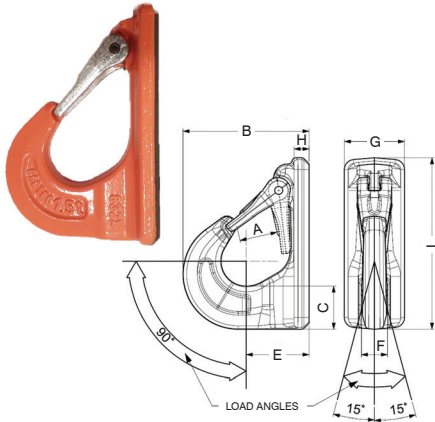


832X Weld-On Bucket Hooks

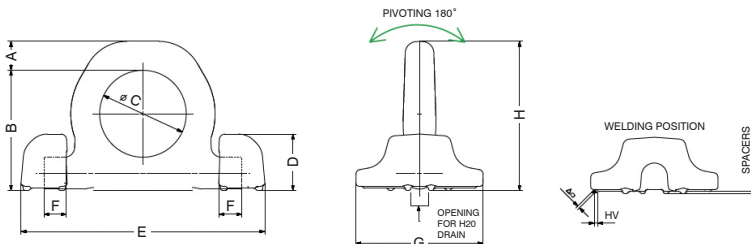


Dimensions (In)										
Part#	WLL tons	A	B	C	D	E	F	G	H	Weight lbs.
C832X015	1.5	0.98	3.11	1.10	1.57	0.59	1.58	0.39	4.61	1.54
C832X025	2.5	1.18	3.98	1.38	1.85	0.83	1.97	0.39	5.79	3.09
C832X040	4	1.46	4.96	1.69	2.48	1.02	2.36	0.59	6.73	5.95
C832X067	6.7	1.89	6.22	2.13	2.80	1.30	2.76	0.59	8.19	10.58

820X Weld-On Lifting Ring Double Base



Dimensions (In)										
Part#	WLL tons	A	B	C	D	E	F	G	H	Weight lbs.
C820X04	4	0.55	2.56	1.89	1.14	5.28	0.55	2.36	3.11	1.61
C820X067	6.7	0.79	3.27	2.36	1.54	6.65	0.63	3.46	4.06	3.97
C820X10	10	0.87	3.78	2.56	1.89	7.72	0.77	3.86	4.65	6.61
C820X16	16	1.22	4.96	3.54	2.17	10.39	1.14	5.00	6.10	12.68
C820X30	30	1.65	6.89	5.12	3.11	14.61	1.77	6.18	8.54	35.27



830XM Weld-On Lifting Ring Single-Base w/Spring



Dimensions (In)										
Part#	WLL tons	A	B	C	D	E	F	G	H	Weight lbs.
C830X015M	1.5	0.55	2.56	1.50	0.98	2.60	0.63	1.22	3.11	0.86
C830X025M	2.5	0.63	2.95	1.77	1.06	3.03	0.71	1.36	3.58	1.30
C830X040M	4	0.71	3.31	2.01	1.26	3.43	0.79	1.57	4.02	1.92
C830X067M	6.7	0.98	4.61	2.65	1.73	4.53	1.02	2.30	5.55	4.92
C830X010M	10	1.22	4.96	2.64	2.17	5.08	1.12	2.78	6.18	7.34
C830X016M	16	1.77	6.85	3.94	2.72	7.48	1.65	3.43	8.62	20.46

