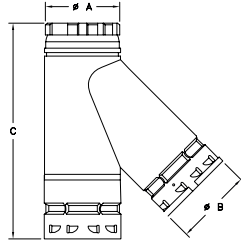




# TYPE B GAS VENT ~ GAS CONNECTORS

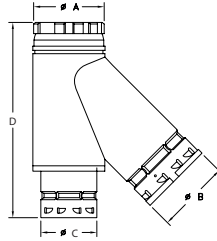
## WYES



**Standard Single-Wall Wye**

- The branch, trunk, and base diameters of the standard single-wall wye are the same size

PART #	SIZE	A	B	C
3FCY	3"	3 1/2"	3 1/2"	9"
4FCY	4"	4 1/2"	4 1/2"	10 1/2"

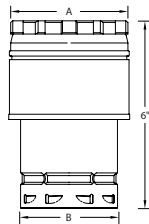


**Reduction Single-Wall Wye**

- Features a branch and/or base with a diameter smaller than the trunk size
- Convenient connection for furnace and water heater into a common connector

PART #	SIZE	A	B	C	D
4FCY-3	4"	4 1/2"	4 1/2"	3 1/2"	9"
4FCY-33	4"	4 1/2"	3 1/2"	3 1/2"	12"
5FCY-34	5"	5 1/2"	4 1/2"	3 1/2"	12"
5FCY-44	5"	5 1/2"	4 1/2"	3 1/2"	13 1/2"
5FCY-43	5"	5 1/2"	3 1/2"	3 1/2"	13 1/2"

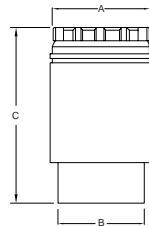
## ADAPTERS



**Single-Wall Increaser**

- Used to increase the connector diameter

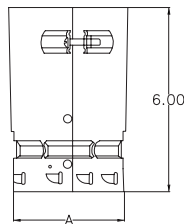
PART #	SIZE	A	B
3FCX4	4"	4 1/2"	3 1/2"
3FCX5	5"	5 1/2"	3 1/2"
3FCX6	6"	6 1/2"	3 1/2"
4FCX5	5"	5 1/2"	4 1/2"
4FCX6	6"	6 1/2"	4 1/2"
5FCX6	6"	6 1/2"	5 1/2"



**Single-Wall Appliance Connector**

- Sized to fit outlet
- Use sheet metal screws for code approved appliance connection

PART #	SIZE	A	B	C
3FC-AC	3"	3 1/2"	3"	6"
4FC-AC	4"	4 1/2"	4"	6"
5FC-AC	5"	5 1/2"	5"	6"



**Single-Wall Universal Adapter**

- Provides a short slip connection with the AmeriVent single-wall snaplock base

PART #	SIZE	A
3FCA	3"	3 1/2"
4FCA	4"	4 1/2"
5FCA	5"	5 1/2"