



**AMETEK**  
**LAMB ELECTRIC**

**Product Bulletin**



**Model: 119400-00**

**DESCRIPTION**

- One stage
- 120 volts
- 5.7"/145 mm diameter
- Ball /Ball bearings
- Single speed
- Thru-flow discharge
- Thermoset fan end bracket
- Thermoset commutator bracket

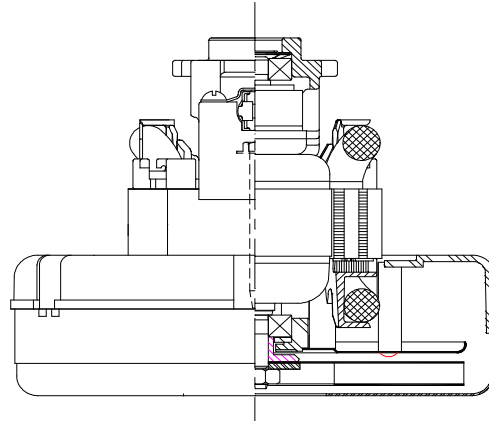
**DESIGN APPLICATION**

- Equipment operating in environments not requiring separation of working air from motor ventilating air
- Designed to handle clean, dry, filtered air only

**SPECIAL FEATURES**

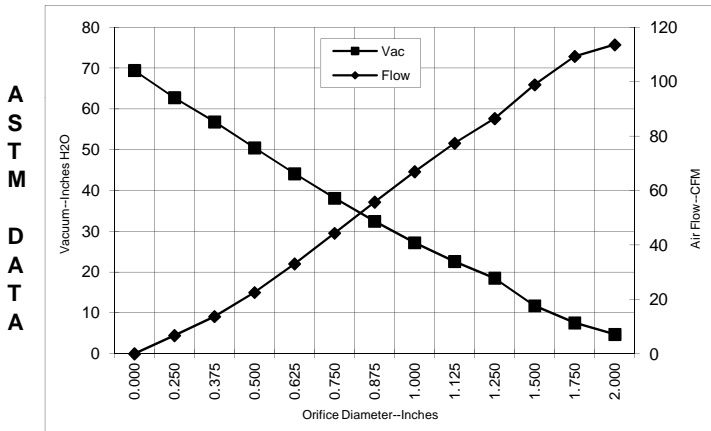
- Suitable for 120 volt AC operation, 50/60 Hz
- UL recognized, category PRGY2 (E47185)
- Provision for grounding
- Skeleton-frame design
- The Lamb Electric vacuum motor line offers a wide range of performance levels to meet design needs.

**Model 119400-00 is the G2K replacement for model 116309-00**

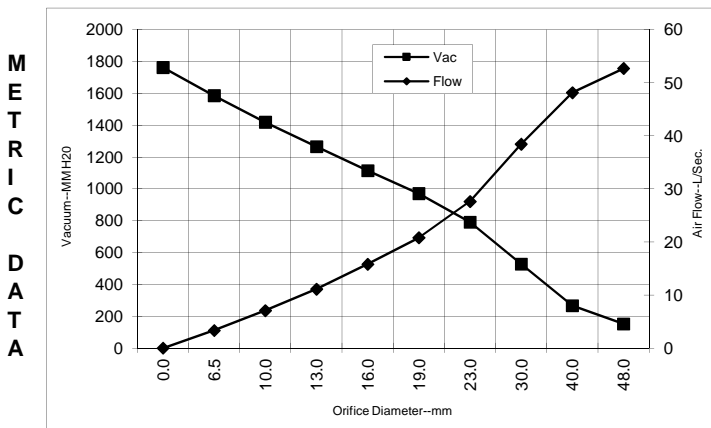


**TYPICAL MOTOR PERFORMANCE.\***

(At 120 volts, 60Hz, test data is corrected to standard conditions of 29.92 Hg, 68° F.)



Orifice (Inches)	Amps	Watts (In)	RPM	Vac (In.H2O)	Flow (CFM)	Air Watts
2.000	7.5	862	21260	4.8	113.5	63
1.750	7.6	868	21220	7.6	109.3	97
1.500	7.5	865	21200	11.8	98.9	137
1.250	7.5	858	21340	18.5	86.4	188
1.125	7.3	839	21600	22.6	77.4	206
1.000	7.1	819	22020	27.2	66.9	214
0.875	6.8	786	22650	32.5	55.7	213
0.750	6.5	750	23350	38.1	44.3	199
0.625	6.1	707	24200	44.1	33.0	172
0.500	5.6	655	25450	50.5	22.5	134
0.375	5.2	608	26750	56.8	13.7	91
0.250	4.9	568	27880	62.7	6.7	49
0.000	4.7	545	28710	69.4	0.0	0



Orifice (mm)	Amps	Watts (In)	RPM	Vac (mm H2O)	Flow (L/Sec)	Air Watts
48.0	7.5	865	21242	152	52.7	78
40.0	7.5	866	21206	267	48.1	125
30.0	7.4	848	21483	528	38.4	198
23.0	6.9	794	22493	791	27.6	213
19.0	6.5	749	23367	971	20.8	198
16.0	6.1	709	24166	1115	15.8	173
13.0	5.7	660	25325	1266	11.1	137
10.0	5.3	615	26555	1419	7.1	98
6.5	4.9	570	27824	1586	3.3	52
0.0	4.7	545	28710	1763	0.0	0

Note: Metric performance data is calculated from the ASTM data above.

\* Data represents performance of a typical motor sampled from a large production quantity. Individual motor data may vary due to normal manufacturing variations.

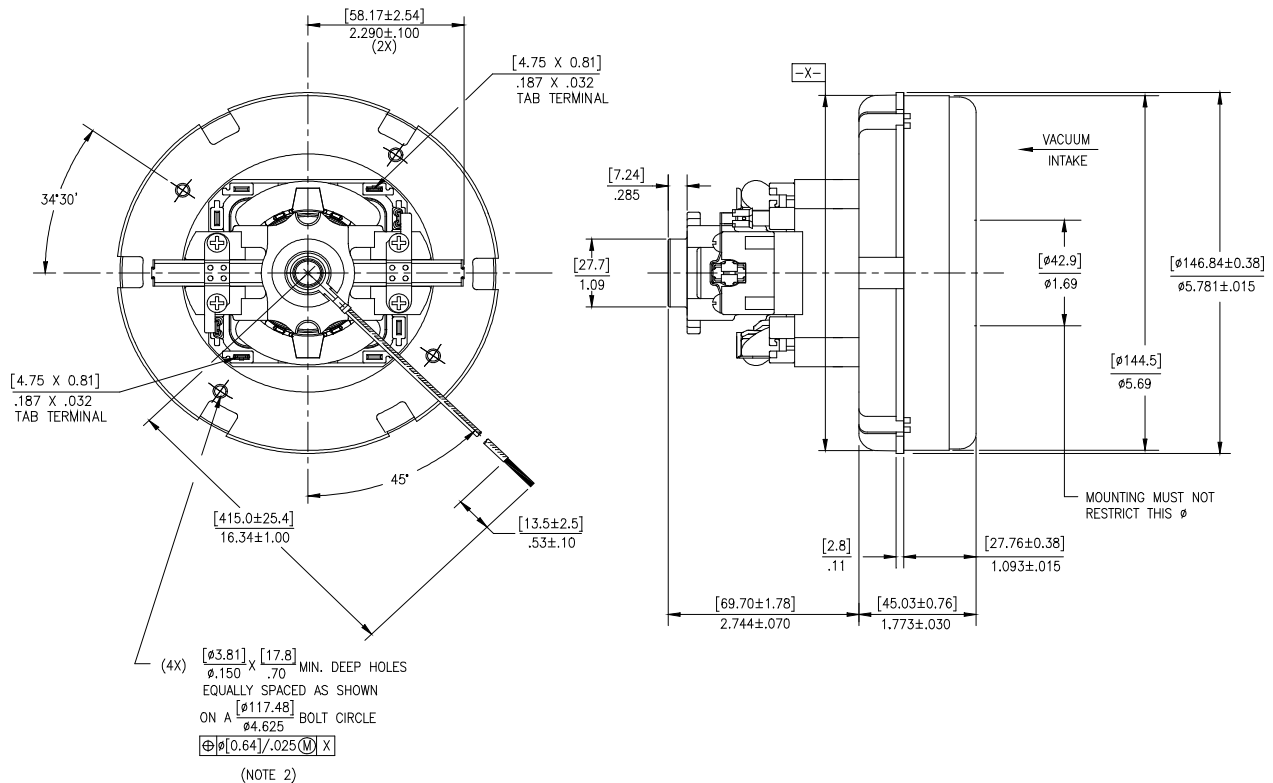
<b>Test Specs:</b>	120 volts	<b>Minimum Sealed Vacuum:</b>	56.0	<b>ORIFICE:</b>	7/8 "	<b>Minimum Vacuum:</b>	26.0"	<b>Maximum Watts:</b>	850
--------------------	-----------	-------------------------------	------	-----------------	-------	------------------------	-------	-----------------------	-----

DIMENSIONS



NOTES:

- 1. MOTOR IDENTIFICATION: MANUFACTURER'S NAME, MODEL NUMBER, VOLTAGE, FREQUENCY, INSPECTORS CODE, DATE OF MANUFACTURE, AGENCY RECOGNITION CODE, PLANT LOCATION CODE, AND MADE IN THE USA.
- 2. RECOMMENDED SCREW SIZE 10-16 TYPE BT OR TYPE 25 THREAD CUTTING SCREW. MAXIMUM PENETRATION [17.40]/.685.
- 3. GROUND LEAD: 18 GAUGE STRANDED; COLOR: GREEN WITH YELLOW STRIPE.



**IMPORTANT NOTE:** Pictorial and dimensional data are subject to change without notice. Contact factory for current revision levels.

**WARNING** - AMETEK Lamb Electric thru-flow vacuum motors must never be used in applications in which wet or moist conditions are involved, where dry chemicals or other volatile materials are present, or where airflow may be restricted or blocked. Such motors are designed to permit the vacuumed air to pass over the electrical winding to cool it. Thus any foam, liquid (including water), dry chemical, or other foreign substance coming in contact with electrical conductors could cause combustion (depending on volatility) or electrical shock. Failure to observe these precautions could result in property damage and severe personal injury, including death in extreme cases. All applications incorporating Lamb Electric motors should be submitted to Underwriters Laboratories Inc. or other appropriate organizations or agencies for testing specifically related to the safety of your equipment.

**AMETEK/Floorcare & Specialty Motors**  
[www.ametekfsm.com](http://www.ametekfsm.com)