

### 36CLF SERIES



Versatile, all-purpose Apollo 36CLF Series pressure reducing valves handle pressures up to 400 PSI. Compact and with a built-in thermal expansion bypass, they're designed to protect residential and commercial water distribution systems from excessive pressures. The valves' integral thermoplastic cage helps protect the inner adjusting spring from galvanic corrosion. Built for reliable, long-term service, these valves offer an all-bronze body, stainless steel strainer and seat. They comply with ASSE 1003 and CSA B356 standards. They are listed with IAPMO and City of Los Angeles. Designed for easy in-line servicing, 36CLF models come standard with a clean-out plug on the housing's bottom. Both seat disc and strainer can be maintained via the clean-out plug using a 1-1/2" hex socket. Available with or without gauge tapping and gauge.

### FEATURES

- Dependable Cast Bronze Body
- Suitable for Supply Pressures to 400 psi
- Every Valve is 100% Factory Set and Tested
- Standard Factory Setting is 50 psi
- High and Low Pressure Options
- Diaphragm Suitable for 33° - 180°F Solder, Threaded, PEX B/C F1807, CPVC, and Press Connection Options
- Sealed Cage with SS Adjusting Screw for Vault Installation
- Integral Thermal Expansion Bypass
- Integral Stainless Steel Strainer
- Single and Double Union Options
- In-Line Repairable, Bottom Access
- **Proudly Made in USA**

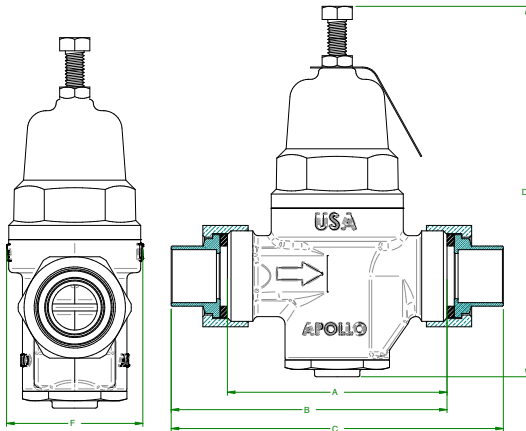
### OPTIONS

- (-P) Tapped 1/4" & Plugged
- (-G) With Pressure Gauge
- (-02) 10-35 psig
- (-03) 75-125 psig
- 36C Non-LF Materials for Non-Potable Service, such as Irrigation

### APPROVALS

- ASSE 1003
- CSA B356
- NSF/ANSI/CAN 372 - Lead Free
- City of Los Angeles
- IAPMO

### DIMENSIONS



WATER PRESSURE REDUCING VALVES

LEAD FREE PART NUMBER	STANDARD BRONZE PART NUMBER	SIZE (IN.)	DIMENSIONS (IN.)		WT./100 (LB.)
			A	OVERALL LENGTH	
<b>NO UNION - FNPT INLET X OUTLET</b>					
36CLF20301	36C20301	1/2"	3.63	3.63	2.00
36CLF20401	36C20401	3/4"	3.63	3.63	2.00
36CLF20501	36C20501	1"	3.89	3.89	2.50
<b>SINGLE UNION - FNPT UNION INLET X FNPT OUTLET</b>					
36CLF10301	36C10301	1/2"	3.63	4.58	2.37
36CLF10401	36C10401	3/4"	3.63	4.56	2.37
36CLF10501	36C10501	1"	3.89	4.95	2.99
<b>SINGLE UNION - SOLDER UNION INLET X FNPT OUTLET</b>					
36CLF30301	36C30301	1/2"	3.63	4.56	2.35
36CLF30401	36C30401	3/4"	3.63	4.56	2.29
36CLF30501	36C30501	1"	3.89	4.95	2.91
<b>SINGLE UNION - CPVC UNION INLET X FNPT OUTLET</b>					
36CLF30401C	36C30401C	3/4"	3.63	4.55	2.21
36CLF30501C	36C30501C	1"	3.89	5.05	2.99
<b>DOUBLE UNION - THREADED INLET X THREADED OUTLET</b>					
36CLF40301	36C40301	1/2"	3.63	5.53	2.74
36CLF40401	36C40401	3/4"	3.63	5.49	2.74
36CLF40501	36C40501	1"	3.89	6.01	3.48
<b>DOUBLE UNION - SOLDER INLET X SOLDER OUTLET</b>					
36CLF50301	36C50301	1/2"	3.63	5.49	2.70
36CLF50401	36C50401	3/4"	3.63	5.49	2.58
36CLF50501	36C50501	1"	3.89	6.01	3.32
<b>DOUBLE UNION - CPVC INLET X CPVC OUTLET</b>					
36CLF50401C	36C50401C	3/4"	3.63	5.47	2.42
36CLF50501C	36C50501C	1"	3.89	6.21	3.48
<b>DOUBLE UNION - PEX F1807** INLET X PEX F1807** OUTLET</b>					
36CLF90301	36C90301	1/2"	3.63	5.67	2.58
36CLF90401	36C90401	3/4"	3.63	6.13	2.58
36CLF90501	36C90501	1"	3.89	6.99	3.36
<b>DOUBLE UNION - PEX F1960 INLET X PEX F1960 OUTLET</b>					
36CLF90301X2	36C90301X2	1/2"	3.63	6.03	2.58
36CLF90401X2	36C90401X2	3/4"	3.63	6.03	2.58
36CLF90501X2	36C90501X2	1"	3.89	6.23	3.36

\* PEX A (ASTM F1960) Cold Expansion PEX

\*\* PEX B/C (ASTM F1807) Crimp PEX