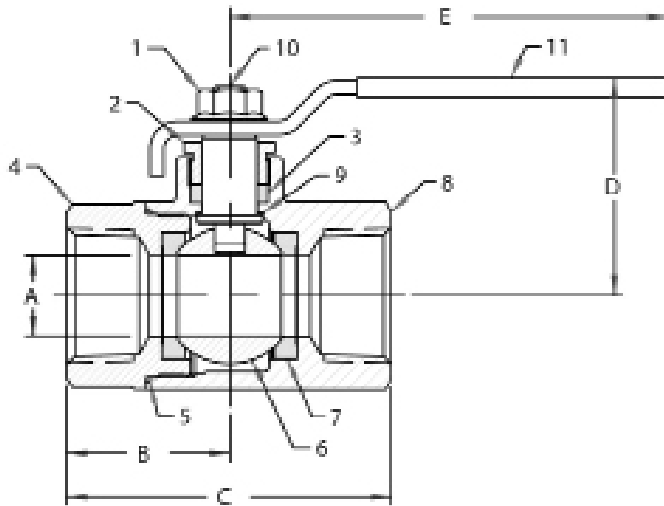


Female NPT Thread, 1/4" to 1" 2000 CWP (psig), 1-1/4" to 2" 1500 CWP(psig), Cold Non-Shock. 150 psig Saturated Steam.
 (See referenced P/T chart)
 Vacuum Service to 29 inches Hg.
 MSS SP-110 Compliant.
 AAR Approved #E999032

FEATURES

- Forged construction
- Raised handle stops
- Blowout-proof stem design
- Adjustable packing gland
- Zinc phosphate corrosion protection
- Fire safe to API 607 (requires -24 suffix)



STANDARD MATERIAL LIST

| PART | MATERIAL |
|------|---|
| 1 | Lever nut Steel, zinc plated |
| 2 | Gland nut A108-CS |
| 3 | Stem packing MPTFE |
| 4 | Retainer A216-WCB |
| 5 | Body seal RPTFE (1/2" to 2") |
| 6 | Ball ASTM A108, Carbon Steel, Chrome Plated or ASTM A276, Type 316 Stainless Steel |
| 7 | Seat (2) RPTFE |
| 8 | Body A105 |
| 9 | Stem bearing RPTFE |
| 10 | Stem ASTM A108, Carbon Steel or ASTM A276, Type 316 Stainless Steel |
| 11 | Lever/grip Steel, zinc plated, with vinyl |

DIMENSIONS

| PART NO. | SIZE | A | B | C | D | E | WT. |
|-----------|--------|------|------|------|------|------|------|
| 73A10101A | 1/4" | 0.38 | 1.03 | 2.05 | 1.72 | 3.85 | 0.58 |
| 73A10201A | 3/8" | 0.38 | 1.03 | 2.05 | 1.72 | 3.85 | 0.54 |
| 73A10301A | 1/2" | 0.50 | 1.12 | 2.23 | 1.78 | 3.88 | 0.63 |
| 73A10401A | 3/4" | 0.68 | 1.47 | 2.97 | 2.05 | 4.75 | 1.27 |
| 73A10501A | 1" | 0.87 | 1.65 | 3.32 | 2.18 | 4.75 | 2.20 |
| 73A10601 | 1-1/4" | 1.00 | 1.98 | 3.97 | 2.72 | 5.50 | 3.74 |
| 73A10701 | 1-1/2" | 1.25 | 2.17 | 4.35 | 3.20 | 7.76 | 5.30 |
| 73A10801 | 2" | 1.50 | 2.73 | 5.44 | 3.27 | 7.75 | 8.03 |

VARIATIONS AVAILABLE

- 73A-140 Series (316 SS Ball & Stem. NACE MR0175 (2000) & MR0103 (2003) compliant)

OPTIONS AVAILABLE

(MORE INFORMATION IN SECTION J)

- Minimum quantities apply
- To specify an option, replace the "01" standard suffix with the suffix of the option.
- To specify multiple options, replace the "01" suffix with the desired suffixes in the numerical order shown below. NOTE: Not all suffixes can be combined together.

| (SUFFIX) | OPTION | SIZES |
|----------|--|----------------|
| -01 | Standard Configuration | All |
| -P-01 | BSPP (Parallel) Thread Connection | All |
| -T-01 | BSPT (Tapered) Thread Connection | All |
| -02- | Stem Grounded | All |
| -04- | 2-1/4" Stem Extension (Carbon Steel, Zinc Plated) | All |
| -07- | Steel Tee Handle | 1/4" to 1-1/2" |
| -08- | 90° Reversed Stem | All |
| -10- | SS Lever & Nut | All |
| -14- | Vented Ball | All |
| -15- | Wheel Handle, Steel | 1/4" to 1-1/2" |
| -16- | Chain Lever - Vertical | 3/4" to 2" |
| -21- | UHMWPE Trim (non TFE) | All |
| -24- | Graphite Packing, PTFE Body Seal, RPTFE Bearing (API 607, 6th Edition, ISO 10497:2010) | All |
| -27- | SS Latch-Lock Lever & Nut | All |
| -30- | Cam-Lock & Grounded | All |
| -32- | SS Tee Handle & Nut | All |
| -35- | PTFE Trim | All |
| -39- | SS Hi-Rise Locking Round Handle, SS Nut | All |
| -40- | Cyl-Loc & Grounded | All |
| -45- | Less Lever & Nut | All |
| -47- | SS Oval Latch-Lock Handle & Nut | All |
| -48- | SS Oval Handle (No Latch) & Nut | All |
| -50- | 2-1/4" CS Locking Stem Extension | All |
| -52- | Two Tack Welds | All |
| -56- | Multi-Fill Seats | All |
| -58- | Chain Lever - Horizontal | 3/4" to 2" |
| -60- | Static Grounded Ball & Stem | All |
| -64- | 250# Steam Trim (MPTFE Seats & Packing) Use with 316 SS Ball & Stem Variation | All |
| -67- | Cleaned for Industrial Gas - CS Valves | All |
| -UA- | AIS (American Iron & Steel) Compliant | All |

Pressure/Temperature Ratings -
 Page M-14, Graph No. 13 (1/4" to 1")
 Page M-13, Graph No. 11 (1-1/4" to 2")