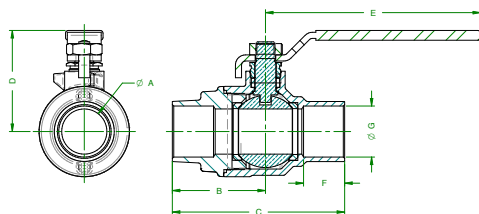
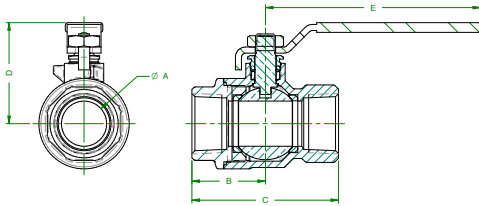


77C-100/200-A SERIES

CONTRACTOR SERIES FULL PORT BRONZE BALL VALVE WITH SOLID BALL



Apollo's solid ball design delivers true full-port performance with 100% American construction. The next generation mod -"A" adds a new beefier lever, simplified packing adjustment, wider seats and stem packing and a 150 SWP body marking.

FEATURES

- ASTM Grade DZR Bronze Castings
- Solid Brass Ball, Plated
- 600 psig CWP, Non-Shock
- 150 SWP Steam Rating
- Generous RPTFE Seats and Stem Packing
- Adjustable Stem Packing
- Blowout-Proof Stem Design
- Vacuum Service to 29 in. Hg
- Full-Port Design Through 2-1/2"
- ANSI B16.18 Solder End Version Available as 77C-200 Series
- CSA B51- CRN OC10908.5C
- MSS SP-110 Ball Valves
- IAPMO/ANSI Z1157 Ball Valves
- **Proudly Made in USA**

OPTIONS*

- (-01) Standard Lever and Trim
- (-04) 2-1/4" Stem Extension
- (-07) CS Tee Handle
- (-10) Stainless Steel Handle and Nut
- (-11) Therma-Seal™ Insulating Tee
- (-27) Locking Handle
- (-50) 2-1/4" Locking Stem Extension
- (-92) Balancing Stop
- (-94) 2-1/4" Stem Extension and Balancing Stop
- SS Vented Ball and Stem (77C140 and 77C240 Series)
- **77C-ULA (UL 258 - Fire Protection Trim & Drain, Guide VQGU) Option NEW!**
- Flammable Gas Listed (CSA & UL) Model 77G-UL (See Page B-26)
- Other Handle Options Available

Also Available in a Lead Free Version as the 77CLF-A Series

Lever option kits for the 77C-A models differ from the previous 77C model. Refer to the latest Apollo kit listing or contact Apollo Tech Support for assistance.

DIMENSIONS

| PART NUMBER | SIZE (IN.) | DIMENSIONS (IN.) | | | | | | | C _v | WT. * (LB.) |
|---------------|------------|------------------|------|------|------|------|------|------|----------------|-------------|
| | | A | B | C | D | E | F | G | | |
| NPT | | | | | | | | | | |
| 77C-101-01A | 1/4" | 0.37 | 0.88 | 1.8 | 1.65 | 2.82 | - | - | 5 | 0.6 |
| 77C-102-01A | 3/8" | 0.37 | 0.94 | 1.86 | 1.65 | 2.82 | - | - | 7 | 0.6 |
| 77C-103-01A | 1/2" | 0.50 | 1.15 | 2.29 | 1.79 | 3.82 | - | - | 16 | 0.6 |
| 77C-104-01A | 3/4" | 0.75 | 1.34 | 2.67 | 1.91 | 3.82 | - | - | 36 | 1.0 |
| 77C-105-01A | 1" | 1.00 | 1.63 | 3.24 | 2.24 | 4.72 | - | - | 68 | 1.8 |
| 77C-106-01A | 1-1/4" | 1.25 | 1.9 | 3.75 | 2.46 | 4.72 | - | - | 125 | 4.2 |
| 77C-107-01A | 1-1/2" | 1.50 | 2.06 | 4.11 | 2.9 | 5.37 | - | - | 177 | 4.6 |
| 77C-108-01A | 2" | 2.00 | 2.43 | 4.85 | 3.68 | 7.72 | - | - | 389 | 7.9 |
| 77C-109-01A | 2-1/2" | 2.50 | 3.03 | 6.02 | 4.13 | 7.72 | - | - | 503 | 16.4 |
| SOLDER | | | | | | | | | | |
| 77C-202-01A | 3/8" | 0.37 | 1.24 | 2.17 | 1.65 | 2.82 | 0.41 | 0.50 | 7 | 0.6 |
| 77C-203-01A | 1/2" | 0.50 | 1.36 | 2.47 | 1.79 | 3.82 | 0.50 | 0.63 | 16 | 0.6 |
| 77C-204-01A | 3/4" | 0.75 | 1.73 | 3.20 | 1.91 | 3.82 | 0.75 | 0.88 | 36 | 1.0 |
| 77C-205-01A | 1" | 1.00 | 2.06 | 3.81 | 2.24 | 4.72 | 0.91 | 1.13 | 68 | 1.5 |
| 77C-206-01A | 1-1/4" | 1.25 | 2.22 | 4.21 | 2.46 | 4.72 | 0.97 | 1.38 | 125 | 3.9 |
| 77C-207-01A | 1-1/2" | 1.50 | 2.53 | 4.90 | 2.9 | 5.37 | 1.09 | 1.63 | 177 | 5.9 |
| 77C-208-01A | 2" | 2.00 | 3.15 | 6.07 | 3.68 | 7.72 | 1.34 | 2.13 | 389 | 7.5 |
| 77C-209-01A | 2-1/2" | 2.50 | 3.78 | 7.17 | 4.13 | 7.72 | 1.48 | 2.63 | 503 | 14.5 |

*Weights based on Standard Configuration