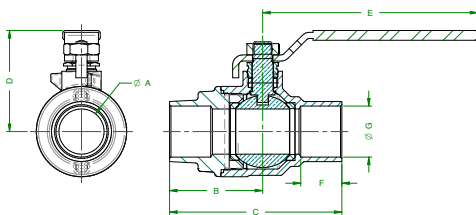
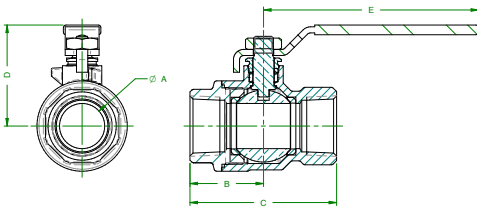


77CLF-100/200-A SERIES

CONTRACTOR SERIES FULL PORT BRONZE BALL VALVE WITH SOLID BALL



Apollo's solid ball design delivers true full-port performance with 100% American construction. The next generation mod -"A" adds a new beefier lever, simplified packing adjustment, wider seats and stem packing and a 150 SWP body marking. Ideal for a wide variety of HVAC and plumbing applications including potable water.

FEATURES

- Lead Free DZR Bronze Castings
- Solid Brass Ball, Plated
- 600 psig CWP, Non-Shock
- 150 SWP Steam Rating
- Generous RPTFE Seats and Stem Packing
- Adjustable Stem Packing
- Blowout-Proof Stem Design
- EZ-Solder™ Lead Free Bronze
- Vacuum Service to 29 in. Hg
- Full-Port Design Through 2-1/2"
- ANSI B16.18 Solder End Version Available

- as 77CLF-200 Series
- MSS SP-110 Ball Valves
- IAPMO/ANSI Z1157 Ball Valves
- NSF/ANSI/CAN 61 Water Quality
- NSF/ANSI/CAN 372 Lead Free
- City of Los Angeles DBS
- CRN: 0C10908.5C
- EU Directive 2015/863 (RoHS 3) Compliant
- EU Regulation (EC) 1907/2006 (REACH) Compliant
- **Proudly Made in USA**

OPTIONS*

- (-01) Standard Lever and Trim
- (-04) 2-1/4" Stem Extension
- (-07) CS Tee Handle
- (-10) Stainless Steel Handle and Nut
- (-11) Therma-Seal™ Insulating Tee
- (-27) Locking Handle
- (-50) 2-1/4" Locking Stem Extension
- (-92) Balancing Stop
- (-94) 2-1/4" Stem Extension and Balancing Stop
- SS Vented Ball and Stem (77CLF140 and 77CLF240 Series)
- **77C-ULA (UL 258 - Fire Protection Trim & Drain, Guide VQGU) Option** **NEW!**
- Flammable Gas Listed (CSA & UL) Model 77G-UL (See Page B-26)
- Other Handle Options Available
- Also Available in Standard Bronze as the 77C-A Series

Lever option kits for the 77CLF-A models differ from the previous 77CLF model. Refer to the latest Apollo kit listing or contact Apollo Tech Support for assistance.

DIMENSIONS

PART NUMBER	SIZE (IN.)	DIMENSIONS (IN.)							C _v	WT. * (LB.)
		A	B	C	D	E	F	G		
NPT										
77CLF-101-01A	1/4"	0.37	0.88	1.8	1.65	2.82	-	-	5	0.6
77CLF-102-01A	3/8"	0.37	0.94	1.86	1.65	2.82	-	-	7	0.6
77CLF-103-01A	1/2"	0.50	1.15	2.29	1.79	3.82	-	-	16	0.6
77CLF-104-01A	3/4"	0.75	1.34	2.67	1.91	3.82	-	-	36	1.0
77CLF-105-01A	1"	1.00	1.63	3.24	2.24	4.72	-	-	68	1.8
77CLF-106-01A	1-1/4"	1.25	1.9	3.75	2.46	4.72	-	-	125	4.2
77CLF-107-01A	1-1/2"	1.50	2.06	4.11	2.9	5.37	-	-	177	4.6
77CLF-108-01A	2"	2.00	2.43	4.85	3.68	7.72	-	-	389	7.9
77CLF-109-01A	2-1/2"	2.50	3.03	6.02	4.13	7.72	-	-	503	16.4
SOLDER										
77CLF-202-01A	3/8"	0.37	1.24	2.17	1.65	2.82	0.41	0.50	7	0.6
77CLF-203-01A	1/2"	0.50	1.36	2.47	1.79	3.82	0.50	0.63	16	0.6
77CLF-204-01A	3/4"	0.75	1.73	3.20	1.91	3.82	0.75	0.88	36	1.0
77CLF-205-01A	1"	1.00	2.06	3.81	2.24	4.72	0.91	1.13	68	1.5
77CLF-206-01A	1-1/4"	1.25	2.22	4.21	2.46	4.72	0.97	1.38	125	3.9
77CLF-207-01A	1-1/2"	1.50	2.53	4.90	2.9	5.37	1.09	1.63	177	5.9
77CLF-208-01A	2"	2.00	3.15	6.07	3.68	7.72	1.34	2.13	389	7.5
77CLF-209-01A	2-1/2"	2.50	3.78	7.17	4.13	7.72	1.48	2.63	503	14.5

*Weights based on Standard Configuration