








# AL Ball and Cushion Flexible Fixture Hangers

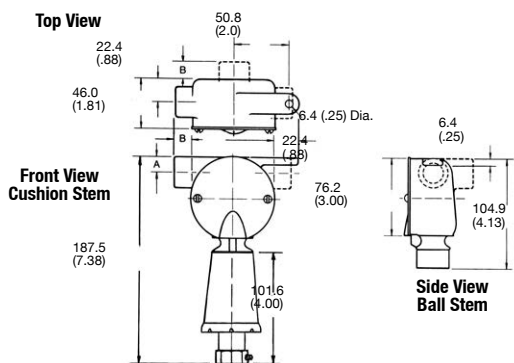
UNILETS® for Use with Threaded Rigid Metal Conduit and IMC.

NEC:  
Listed for Ordinary (Unclassified) Locations

POLES/HANGERS: NEC/CEC ORDINARY LOCATION FLEXIBLE FIXTURE HANGERS

	Size (Inches)	Support Weight kg (lbs)	Catalog Number
<b>AL – Hanger Bodies</b>			
	1/2	(Refer to Cushion and Ball Fixture Stems Below)	<b>ALA50</b>
	3/4		<b>ALA75</b>
	1/2	(Refer to Cushion and Ball Fixture Stems Below)	<b>ALC50</b>
	3/4		<b>ALC75</b>
	1		<b>ALC100</b>
	1/2	(Refer to Cushion and Ball Fixture Stems Below)	<b>ALL50</b>
	3/4		<b>ALL75</b>
	1/2	(Refer to Cushion and Ball Fixture Stems Below)	<b>ALT50</b>
	3/4		<b>ALT75</b>
	1		<b>ALT100</b>
<b>AL – Ball Fixture Stem</b>			
	1/2	112.5 (250)	<b>BJ50</b>
	3/4		<b>BJ75</b>
<b>AL – Cushion Fixture Stems</b>			
Fixture stem tapped for 3/4"; 3/4" to 1/2" reducer furnished for 1/2" stems. With setscrew for locking fixture stem.			
	3/4 or 1/2	1.4-5.4 (3-12)	<b>CJC75-12</b>
	3/4 or 1/2	5.4-21.6 (12-48)	<b>CJC75-48</b>
	3/4 or 1/2	21.6-54.0 (48-120)	<b>CJC75-120</b>
<b>AL – Porcelain Connection Block</b>			
	2 Wire, 20 Amp, 277 Volt Maximum Wire Size Two No. 10 AWG Large Terminal Two No. 14 AWG Small Terminal		<b>CB202</b>

## AL Fixture Hanger Dimensions – Millimeters (Inches)



Conduit Trade Size	Dimensions in Millimeters (Inches)	
	A	B
1/2"	4.2 (0.56)	17.5 (0.69)
3/4"	17.5 (0.69)	17.5 (0.69)
1"	22.4 (0.88)	20.6 (0.81)