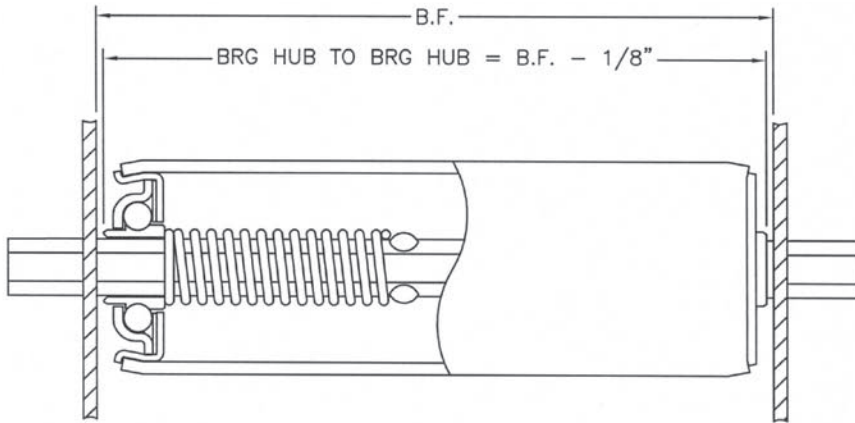


# REPLACEMENT ROLLERS

## DG Roller 1.9" Dia. x 12 Ga. with 7/16" Hex Axle - Model DG



Part Number	BF	Wt. (lbs.)	Capacity (lbs.)
DG13	13"	3.23	270
DG14	14"	3.46	270
DG15	15"	3.68	270
DG16	16"	3.90	270
DG17	17"	4.12	270
DG18	18"	4.34	270
DG19	19"	4.56	270
DG20	20"	4.78	270
DG21	21"	5.00	270
DG22	22"	5.22	270
DG23	23"	5.44	270
DG24	24"	5.66	270
DG25	25"	5.88	270
DG27	27"	6.32	270
DG31	31"	7.21	270
DG33	33"	7.65	270
DG36	36"	8.31	270
DG37	37"	8.53	270
DG39	39"	8.97	270
DG43	43"	9.85	288
DG47	47"	10.73	258
DG51	51"	11.62	242

### Construction:

**Tube:** 1.9" O.D. x 12 ga. galvanized steel

**Axle:** 7/16" hex steel

**Bearing:** Light oil, swaged

**Axle Retention:** Spring retained

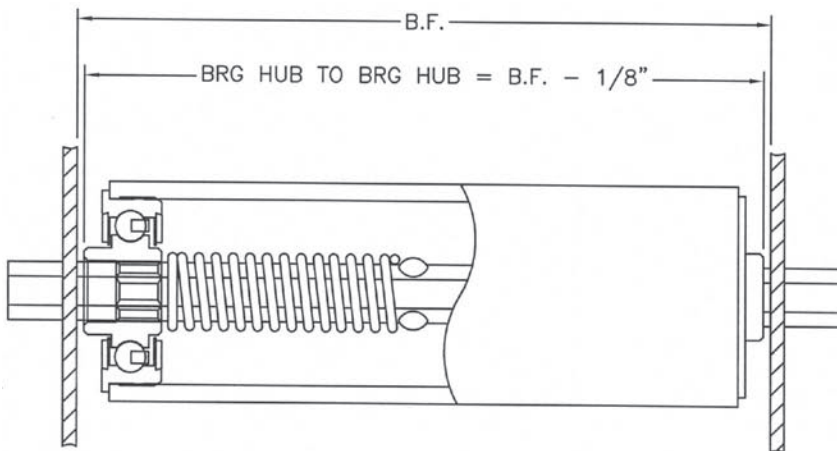
**Weight:** .37 + (.22 x BF)

**Shaft Length:** BF+1-9/16"

Shorter, longer and in-between BF's available.

Part Number	BF	Wt. (lbs.)	Capacity (lbs.)
DG07	7"	1.91	270
DG08	8"	2.13	270
DG09	9"	2.35	270
DG10	10"	2.57	270
DG11	11"	2.79	270
DG12	12"	3.01	270

## KD Roller 1.9" Dia. x 9 Ga. with 7/16" Hex Axle - Model KD



Part Number	BF	Wt. (lbs.)	Capacity (lbs.)
KD14	14"	4.29	734
KD15	15"	4.56	682
KD16	16"	4.84	636
KD17	17"	5.12	597
KD18	18"	5.40	562
KD19	19"	5.67	531
KD20	20"	5.95	503
KD21	21"	6.23	478
KD22	22"	6.51	455
KD23	23"	6.78	434
KD24	24"	7.06	416
KD25	25"	7.34	398
KD27	27"	7.89	368
KD31	31"	9.00	319
KD33	33"	9.56	299
KD36	36"	10.39	273
KD37	37"	10.67	266
KD39	39"	11.22	252
KD43	43"	12.33	228
KD47	47"	13.44	208
KD51	51"	14.55	191

### Construction:

**Tube:** 1.9" O.D. x 9 ga. plain steel

**Axle:** 7/16" hex steel

**Bearing:** Light oil, press fit

**Axle Retention:** Spring retained

**Weight:** .40 + (.28 x BF)

**Shaft Length:** BF+1-5/16"

Shorter, longer, and in-between BF's available.

Part Number	BF	Wt. (lbs.)	Capacity (lbs.)
KD07	7"	2.34	856
KD08	8"	2.62	856
KD09	9"	2.90	856
KD10	10"	3.18	856
KD11	11"	3.45	856
KD12	12"	3.73	856
KD13	13"	4.01	795

Replacement Rollers