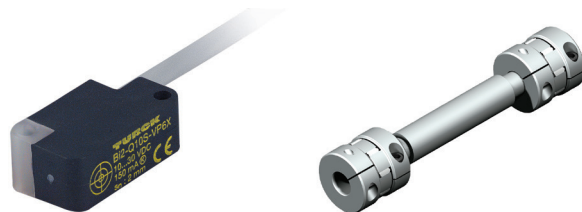


# TOOLS AND ACCESSORIES

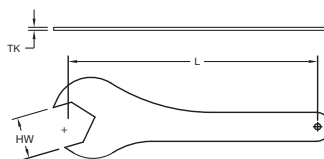
## Other Accessories

- Various inductive proximity sensors, sensor mounting kits, and sensor flags
- Elastomer line shafts in a variety of lengths and diameters
- Additional custom accessories are available to fit your application needs. Contact our applications engineers for assistance.

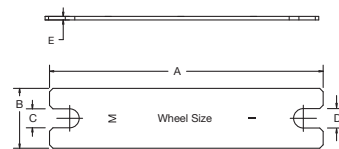


## Fit-up Wrenches

- Eccentric adjustment mounting tools
- Wrenches are included with system orders
- For basic wheel plate, use wheel stud wrench and socket wrench to adjust eccentric wheels (socket wrench not supplied)
- Allows for fit-up adjustment between opposing wheels by rotating eccentric bushing



**Wiper Wheel Plate**



**Basic Wheel Plate**

## Wiper Wheel Plate Wrench

Dimensions								
WRENCH TYPE	WHEEL SIZE	STOCK CODE	WRENCH SIZE (HW)		LENGTH (L)		THICKNESS (TK)	
			IN	MM	IN	MM	IN	MM
Wheel Bolt	1	1PWRB	.220	5.6	3.99	101.3	.091	2.3
	2	2PWRB	.344	8.7	4.50	114.3	.125	3.2
	3	3PWRB	.440	11.2	5.00	127.0	.133 to .165	3.4 to 4.2
	4	4PWRB	.503	12.8	5.50	138.9	.133 to .165	3.4 to 4.2
Eccentric Bushing	1	1PWRX	.439	11.2	4.00	101.6	.063	1.6
	2	2PWRX	.564	14.3	4.50	114.3	.063	1.6
	3	3PWRX	.752	19.1	5.10	129.5	.105	2.7
	4	4PWRX	.877	22.3	5.80	147.3	.105	2.7

## Basic Wheel Plate Wrench

Dimensions							
WRENCH TYPE	WHEEL SIZE	STOCK CODE	LENGTH (A)	WIDTH (B)	WRENCH SIZE (C)	WRENCH SIZE (D)	THICKNESS (E)
Wheel Stud	1	BAW1	7.00	1.50	.474 - .479	.439 - .444	.0747 + .0143/-0050
	2	BAW2	8.00	1.75	.553 - .558	.565 - .570	.1046 + .0244/-0136
	3	BAW3	9.00	2.00	.750 - .755	.752 - .757	.1345 + .0055/-0165
	4	BAW4	9.00	2.00	.868 - .873	.877 - .882	.1345 + .1275/-0165

Values are in inches. Wrenches are universal for metric and inch.