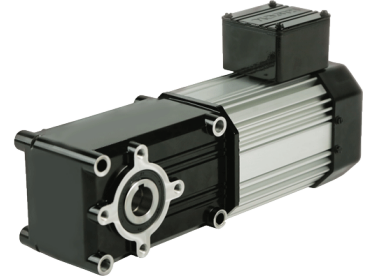


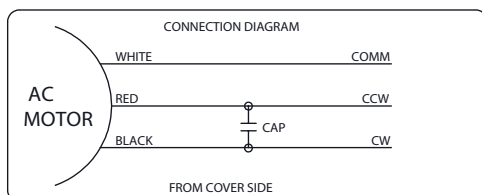
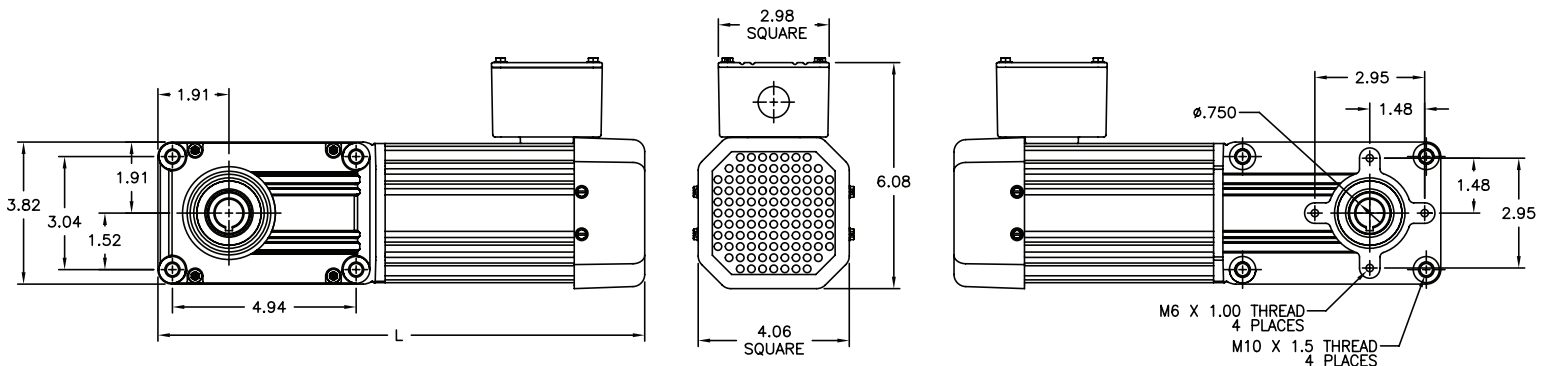
PowerSTAR® 720 Series 115V single phase right-angle gearmotor offers up to 470 in-lbs of torque running continuously in a sleek, compact profile.



720 Series 1PH 115V Gearmotor - TEFC*

| Part Number | Speed (RPM) | Torque (in-lbs) | Input HP | Gear Ratio | OHL (lbs) | Rated Current 115V (Amps) | Hz |
|--------------|-------------|-----------------|----------|------------|-----------|---------------------------|----|
| 026-720A0010 | 168 | 35 | 1/8 | 10 | 270 | 1.70 | 60 |
| 026-720A0015 | 112 | 55 | 1/8 | 15 | 305 | 1.70 | 60 |
| 026-720A0020 | 84 | 73 | 1/8 | 20 | 330 | 1.70 | 60 |
| 026-720A0030 | 56 | 105 | 1/8 | 30 | 370 | 1.70 | 60 |
| 026-720A0040 | 42 | 145 | 1/8 | 40 | 400 | 1.70 | 60 |
| 026-720A0050 | 33 | 185 | 1/8 | 50 | 430 | 1.70 | 60 |
| 026-720A0060 | 28 | 220 | 1/8 | 60 | 455 | 1.70 | 60 |
| 026-720A0080 | 21 | 295 | 1/8 | 80 | 490 | 1.70 | 60 |
| 026-720A0100 | 17 | 365 | 1/8 | 100 | 525 | 1.70 | 60 |
| 026-720A0120 | 14 | 440 | 1/8 | 120 | 550 | 1.70 | 60 |
| 026-720A0150 | 11 | 295 | 1/15 | 150 | 635 | .95 | 60 |
| 026-720A0180 | 9.3 | 355 | 1/15 | 180 | 670 | .95 | 60 |
| 026-720A0240 | 7.0 | 470 | 1/15 | 240 | 725 | .95 | 60 |

*Capacitors required - offered separately. See accessories on page 17



L

L = Gearmotor length:

1/8 HP: 14.84

1/15 HP: 13.09