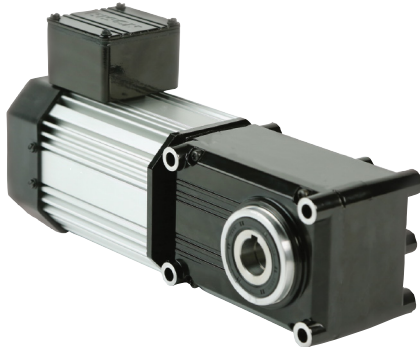


## Maximum Efficiency Right-angle Gearmotors 725 115V Single Phase



PowerSTAR® 725 Series 115V single phase right-angle gearmotor offers up to 900 in-lbs of torque running continuously for reliable and energy efficient operation.

### 725 Series 1PH 115V Gearmotor - TEFC\*

Part Number	Speed (RPM)	Torque (in-lbs)	Input HP	Gear Ratio	OHL (lbs)	Rated Current 115V (Amps)	Hz
026-725A0010	168	60	1/5	10	355	2.61	60
026-725A0015	112	90	1/5	15	400	2.61	60
026-725A0020	84	120	1/5	20	430	2.61	60
026-725A0030	56	180	1/5	30	475	2.61	60
026-725A0040	42	240	1/5	40	510	2.61	60
026-725A0050	34	300	1/5	50	550	2.61	60
026-725A0060	28	360	1/5	60	580	2.61	60
026-725A0080	21	480	1/5	80	620	2.61	60
026-725A0100	17	380	1/8	100	740	1.86	60
026-725A0120	14	450	1/8	120	780	1.86	60
026-725A0150	11	570	1/8	150	820	1.86	60
026-725A0180	9.3	680	1/8	180	870	1.86	60
026-725A0240	7	900	1/8	240	940	1.86	60

\*Capacitors required - offered separately. See accessories on page 17

