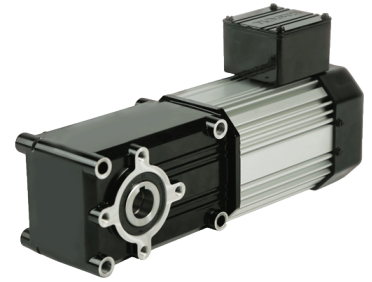


Maximum Efficiency Right-angle Gearmotors 720 230V Three-Phase Inverter Duty

PowerSTAR® 720 Series 230V three-phase right-angle inverter duty gearmotor offers up to 470 in-lbs of torque running continuously in a sleek, compact profile.



720 Series 3PH 230V Gearmotor -TEFC*

Part Number	Speed (RPM)	Rated Torque (in-lbs)	Input HP	Gear Ratio	OHL (lbs)	Rated Current 230V (Amps)
027-720G0010	168	35	1/8	10	270	0.63
027-720G0015	112	55	1/8	15	305	0.63
027-720G0020	84	73	1/8	20	330	0.63
027-720G0030	56	105	1/8	30	370	0.63
027-720G0040	42	145	1/8	40	400	0.63
027-720G0050	34	180	1/8	50	430	0.63
027-720G0060	28	220	1/8	60	455	0.63
027-720G0080	21	295	1/8	80	490	0.63
027-720G0100	17	365	1/8	100	525	0.63
027-720G0120	14	440	1/8	120	550	0.63
027-720G0150	11	295	1/15	150	635	0.39
027-720G0180	9.3	355	1/15	180	670	0.39

See accessories on page 17

