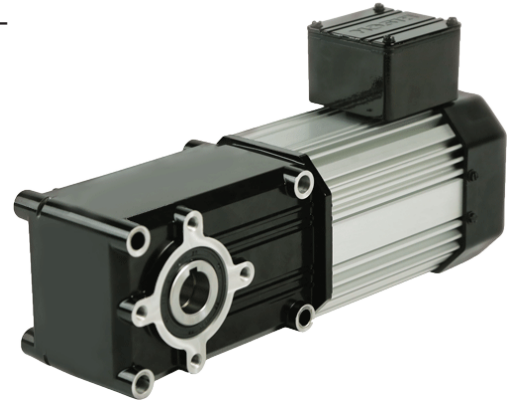


Maximum Efficiency Right-angle Gearmotors 730 230 V Three-Phase Inverter Duty

The heavy duty PowerSTAR® 730 Series 230V three phase right-angle inverter duty gearmotor offers up to 1730 in-lbs of torque running continuously for reliable and energy efficient operation.



730 Series 3PH 230V Inverter Duty 80:1 to 240:1 -TEFC*

Part Number	Speed (RPM)	Rated Torque (in-lbs)	Input HP	Gear Ratio	OHL (lbs)	Rated Current (Amps)
027-730G0080	21	766	1/3	80	820	1.70
027-730G0100	17	725	1/4	100	910	1.55
027-730G0120	14	871	1/4	120	965	1.55
027-730G0150	11	1090	1/4	150	1010	1.55
027-730G0180	9.3	1310	1/4	180	1050	1.55
027-730G0240	7.0	1730	1/4	240	1120	1.55

See accessories on page 17

