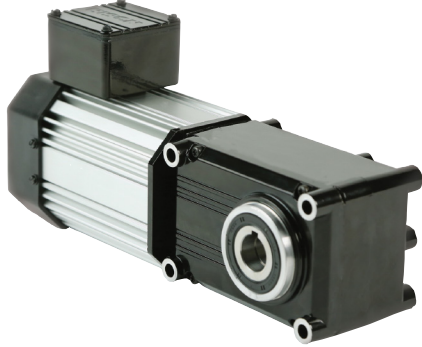


Maximum Efficiency Right-angle Gearmotors

725 230V Three-Phase Inverter Duty



PowerSTAR® 725 Series 230V three-phase right-angle inverter duty gearmotor offers up to 900 in-lbs of torque running continuously for reliable and energy efficient operation.

725 Series 3PH 230V Gearmotor -TEFC*

Part Number	Speed (RPM)	Rated Torque (in-lbs)	Input HP	Gear Ratio	OHL (lbs)	Rated Current 230V (Amps)
027-725G0010	168	60	1/5	10	355	1.1
027-725G0015	112	90	1/5	15	400	1.1
027-725G0020	84	120	1/5	20	430	1.1
027-725G0030	56	180	1/5	30	470	1.1
027-725G0040	42	240	1/5	40	510	1.1
027-725G0050	34	300	1/5	50	550	1.1
027-725G0060	28	360	1/5	60	580	1.1
027-725G0080	21	480	1/5	80	620	1.1
027-725G0100	17	380	1/8	100	740	.85
027-725G0120	14	450	1/8	120	780	.85
027-725G0150	11	570	1/8	150	820	.85
027-725G0180	9.3	680	1/8	180	870	.85
027-725G0240	7.0	900	1/8	240	940	.85

See accessories on page 17

