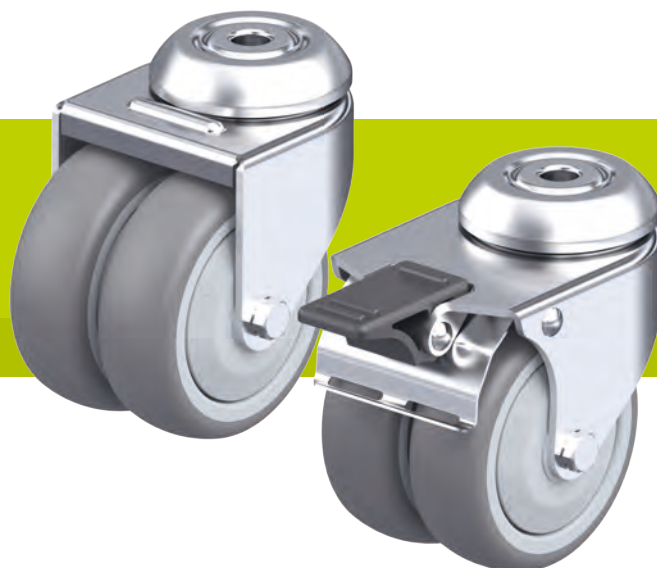


LMDA-TPA series

Twin wheel light duty castors with bolt hole, wheels with thermoplastic rubber tread



1

80–100 kg

Bracket: LMDA series

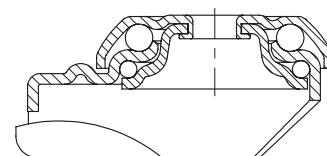
- pressed steel, zinc-plated, blue-passivated, Cr6-free
- double ball bearing in the swivel head
- pressed swivel head

Wheel: TPA series

- tread: high-quality thermoplastic rubber-elastomer (TPE), hardness 85 Shore A, colour grey, non-marking, oil containing
- wheel centre: high-quality polypropylene, impact resistant, colour silver grey ("ELS" version colour black)

Additional details:

- bracket series: page 86
- brakes: page 112–113
- wheel series: page 122
- bearing types: page 84–85



Swivel castors	Swivel castors with "stop-fix" brake	Wheel Ø [mm]	Wheel width [mm]	Load capacity [kg]	Bearing type	Total height [mm]	Plate Ø [mm]	Bolt hole Ø [mm]	Offset swivel castor [mm]
LMDA-TPA 50G	LMDA-TPA 50G-FI	50	2 x 19	80	plain bore	71	41	10.2	31
LMDA-TPA 50KF	LMDA-TPA 50KF-FI	50	2 x 19	80	ball bearing (C)	71	41	10.2	31
LMDA-TPA 75G	LMDA-TPA 75G-FI	75	2 x 25	100	plain bore	98	55	10.2	34
LMDA-TPA 75KF	LMDA-TPA 75KF-FI	75	2 x 25	100	ball bearing (C)	98	55	10.2	34

Versions / options



	plain bore version	electrically conductive version, non-marking grey
Technical description page		50
Product code suffix		-ELS
Available for		all*

* Wheel load capacity of electrically conductive version reduced by 35%