

VSTH, GTH series, wheel Ø 35–200 mm

Heavy-duty wheels
with **Blickle Extrathane®** polyurethane tread,
with steel or cast iron wheel centre



100–1,600 kg

Tread and tyre hardness
 92 Shore A

Smooth operation / floor preservation
 good

Rolling resistance
 very good

Wear resistance
 excellent



Tread:

- high-quality polyurethane elastomer Blickle Extrathane®, hardness 92 Shore A
- low rolling resistance
- high abrasion resistance
- high cut and tear propagation resistance
- colour light brown, non-marking, non-staining
- excellent chemical connection with the wheel centre

Wheel centre:

- series VSTH: steel
- series GTH: rugged grey cast iron, with grease nipple from wheel Ø 150 mm, lacquered, colour silver

Other features:

- high chemical resistance to many aggressive substances
- operating temperature: -20 °C to +70 °C, temporarily up to +90 °C, reduced load capacity over +40 °C

Additional details:

- wheel series: page 66
- tread: page 55
- bearing types: page 84–85
- chemical resistance: page 51

Wheels	Wheel Ø (D) [mm]	Wheel width (T2) [mm]	Load capacity at 4 km/h [kg]	Load capacity at 10 km/h [kg]	Bearing type	Axle bore Ø (d) [mm]	Hub length (T1) [mm]
VSTH 35/6K	35	27	100	–	ball bearing	6	30
VSTH 50/8K	50	33	150	–	ball bearing	8	36
VSTH 60/15K	60	35	200	–	ball bearing	15	35
VSTH 62/10K	60	60	320	–	ball bearing	10	60
VSTH 65/15K	65	40	250	–	ball bearing	15	40
VSTH 75/20K	75	40	270	–	ball bearing	20	40
VSTH 80/20K	80	40	280	–	ball bearing	20	40
VSTH 82/20K	80	70	500	–	ball bearing	20	70
GTH 100/15K	100	40	450	–	ball bearing	15	40
GTH 101/20-50K	100	50	600	–	ball bearing	20	50
GTH 101/20K	100	50	600	–	ball bearing	20	60
GTH 125/15K	125	40	550	–	ball bearing	15	45
GTH 127/20-50K	125	50	700	350	ball bearing	20	50
GTH 127/20K	125	50	700	350	ball bearing	20	60
GTH 127/25-50K	125	50	700	350	ball bearing	25	50
GTH 140/20K	140	54	900	450	ball bearing	20	60
GTH 150/20-50K	150	50	800	400	ball bearing	20	50
GTH 150/20K	150	50	800	400	ball bearing	20	60
GTH 160/20K	160	50	800	400	ball bearing	20	60
GTH 160/25K	160	50	800	400	ball bearing	25	60
GTH 175/20K	175	50	875	430	ball bearing	20	60
GTH 175/25K	175	50	875	430	ball bearing	25	60
GTH 177/25K	175	80	1,300	650	ball bearing	25	80
GTH 181/25K	180	40	800	400	ball bearing	25	40
GTH 182/25K	180	65	1,100	550	ball bearing	25	75
GTH 200/20K	200	50	1,000	500	ball bearing	20	60
GTH 200/25K	200	50	1,000	500	ball bearing	25	60
GTH 201/25K	200	60	1,400	700	ball bearing	25	60
GTH 202/25K	200	80	1,600	800	ball bearing	25	90
GTH 202/30K	200	80	1,600	800	ball bearing	30	90
GTH 202/35K	200	80	1,600	800	ball bearing	35	90

For other wheel Ø, see next page

Versions / options

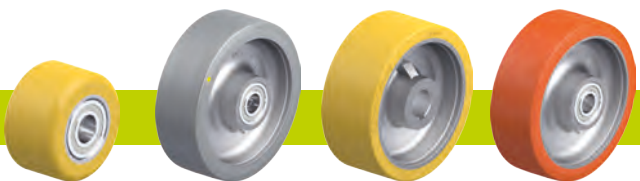


image VSTH	antistatic version, non-marking grey	drive wheels with hub keyway	other shore hardnesses and special colours
Technical description page	50	75	
Product code suffix	-AS	GTHN series	
Available for	upon request	see page 541–542	upon request

