

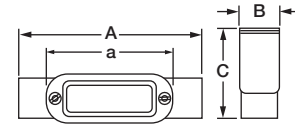
STAINLESS STEEL CONDUIT BODIES - FORM 8 STYLE (Type 316SS)



	Trade Size	Wt. (lbs)	Cubic In.	A	B	C	a	Part Number
C Body	1/2"	1.15	5"	5.994"	1.320"	1.700"	4.320"	S60500CE00
	3/4"	1.60	9"	6.538"	1.550"	1.975"	4.950"	S60700CE00
	1"	2.05	13"	7.690"	1.750"	2.225"	5.650"	S61000CE00
	1 1/4"	3.15	24"	8.695"	2.1750"	2.630"	6.530"	S61200CE00
	1 1/2"	4.50	35"	9.898"	2.530"	3.095"	7.810"	S61500CE00
	2"	8.20	77"	12.554"	3.460"	3.353"	10.00"	S62000CE00



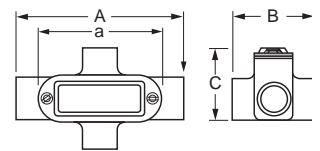
C Body



	Trade Size	Wt. (lbs)	Cubic In.	A	B	C	a	Part Number
TB Body	1/2"	1.00	4"	5.132"	2.132"	1.700"	4.320"	S60500XB00
	3/4"	1.40	7"	5.739"	2.474"	1.975"	4.950"	S60700XB00
	1"	2.00	11"	6.680"	2.790"	2.225"	5.650"	S61000XB00
	1 1/2"	4.40	35"	8.868"	3.585"	3.095"	7.810"	S61500XB00
	2"	6.85	71"	11.274"	4.610"	3.353"	10.00"	S62000XB00



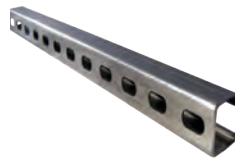
X Body



CALSTRUT™ STAINLESS STEEL STRUT

Available in other sizes, styles and gauges upon request. Available in 10' lengths.

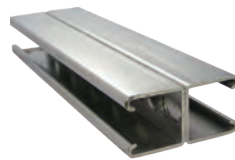
Slotted Strut				
Trade Size	Gauge	Type	Part Number	
1 5/8" x 1 5/8"	12	SS304	S45810ST58	
1 5/8" x 7/8"	14	SS304	S45810ST78	
1 5/8" x 1 5/8"	12	SS316	S65810ST58	
1 5/8" x 7/8"	14	SS316	S65810ST78	



Solid Strut				
Trade Size	Gauge	Type	Part Number	
1 5/8" x 1 5/8"	12	SS304	S45810SL58	
1 5/8" x 7/8"	14	SS304	S45810SL78	
1 5/8" x 1 5/8"	12	SS316	S65810SL58	
1 5/8" x 7/8"	14	SS316	S65810SL78	



Back-To-Back Strut				
Trade Size	Gauge	Type	Part Number	
1 5/8" x 1 5/8"	12	SS304	S45810SB58	
1 5/8" x 7/8"	14	SS304	S45810SB78	
1 5/8" x 1 5/8"	12	SS316	S65810SB58	
1 5/8" x 7/8"	14	SS316	S65810SB78	



Post Base for Channel			
Trade Size	Type	Part Number	
Fits 1 5/8" channel holes - 3/4" dia.	SS304	S45800PB00	
	SS316	S65800PB00	



Square Post Base for Channel			
Trade Size	Type	Part Number	
Fits 1 5/8" channel holes - 3/4" dia.	SS304	S45800PBSQ	
	SS316	S65800PBSQ	



BRITERAIL™ SANITARY STRUT

Length	Weight (ft.) per lb.	Part Number
10'	1.03	S40000STBR

