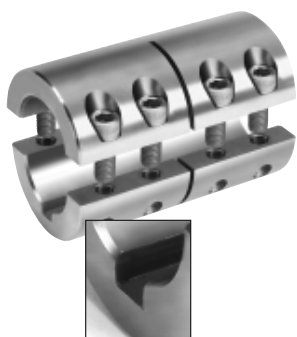


Two-Piece Industry Standard Clamping Couplings - 2ISCC-Series



- High axial load and torque capacity
- Does not mar the shaft
- Easily installed without major disassembly

Black Oxide Steel	Stainless Steel	Bore Size	2nd Bore Size	OD	Length	Clamp Screw	Box Qty	Approx. Weight (oz.)
2ISCC-025-025	2ISCC-025-025-S	1/4	1/4	11/16	1 1/8	4-40 x 3/8	10	1.50
2ISCC-037-025	2ISCC-037-025-S	3/8	1/4	7/8	1 3/8	6-32 x 3/8	5	2.60
2ISCC-037-037	2ISCC-037-037-S	3/8	3/8	7/8	1 3/8	6-32 x 3/8	5	2.60
2ISCC-050-037	2ISCC-050-037-S	1/2	3/8	1 1/8	1 3/4	8-32 x 1/2	5	5.70
2ISCC-050-050	2ISCC-050-050-S	1/2	1/2	1 1/8	1 3/4	8-32 x 1/2	5	5.70
2ISCC-062-050	2ISCC-062-050-S	5/8	1/2	1 5/16	2	10-32 x 1/2	5	8.50
2ISCC-062-062	2ISCC-062-062-S	5/8	5/8	1 5/16	2	10-32 x 1/2	5	8.50
2ISCC-075-050	2ISCC-075-050-S	3/4	1/2	1 1/2	2 1/4	1/4-28 x 5/8	5	12.20
2ISCC-075-062	2ISCC-075-062-S	3/4	5/8	1 1/2	2 1/4	1/4-28 x 5/8	5	12.20
2ISCC-075-075	2ISCC-075-075-S	3/4	3/4	1 1/2	2 1/4	1/4-28 x 5/8	5	12.20
2ISCC-087-062	2ISCC-087-062-S	7/8	5/8	1 5/8	2 1/2	1/4-28 x 5/8	5	15.40
2ISCC-087-087	2ISCC-087-087-S	7/8	7/8	1 5/8	2 1/2	1/4-28 x 5/8	5	15.40
2ISCC-100-050	2ISCC-100-050-S	1	1/2	1 3/4	3	1/4-28 x 5/8	2	23.60
2ISCC-100-075	2ISCC-100-075-S	1	3/4	1 3/4	3	1/4-28 x 5/8	2	23.60
2ISCC-100-100	2ISCC-100-100-S	1	1	1 3/4	3	1/4-28 x 5/8	2	23.60
2ISCC-112-100	2ISCC-112-100-S	1 1/8	1	1 7/8	3 1/8	1/4-28 x 5/8	2	33.00
2ISCC-112-112	2ISCC-112-112-S	1 1/8	1 1/8	1 7/8	3 1/8	1/4-28 x 5/8	2	33.00
2ISCC-125-100	2ISCC-125-100-S	1 1/4	1	2 1/16	3 1/4	1/4-28 x 3/4	2	28.40
2ISCC-125-125	2ISCC-125-125-S	1 1/4	1 1/4	2 1/16	3 1/4	1/4-28 x 3/4	2	28.40
2ISCC-137-100	2ISCC-137-100-S	1 3/8	1	2 1/2	3 5/8	5/16-24 x 1	2	37.00
2ISCC-137-137	2ISCC-137-137-S	1 3/8	1 3/8	2 1/2	3 5/8	5/16-24 x 1	2	37.00
2ISCC-150-100	2ISCC-150-100-S	1 1/2	1	2 5/8	3 7/8	5/16-24 x 1	1	49.50
2ISCC-150-150	2ISCC-150-150-S	1 1/2	1 1/2	2 5/8	3 7/8	5/16-24 x 1	1	49.50
2ISCC-175-175	2ISCC-175-175-S	1 3/4	1 3/4	3 1/8	4 1/2	3/8-24 x 1	1	102.30
2ISCC-200-200	2ISCC-200-200-S	2	2	3 3/8	4 7/8	3/8-24 x 1	1	107.00



DIMENSION
Bore, Inch

TOLERANCE
+.003/- .000

Black Oxide Steel With Keyway	Stainless Steel With Keyway	Bore Size	2nd Bore Size	OD	Length	Clamp Screw	Box Qty	Approx. Weight (oz.)
2ISCC-037-037KW	2ISCC037-037SKW	3/8	3/8	7/8	1 3/8	6-32 x 3/8	5	2.60
2ISCC-050-037KW	2ISCC050-037SKW	1/2	3/8	1 1/8	1 3/4	8-32 x 1/2	5	5.70
2ISCC-050-050KW	2ISCC050-050SKW	1/2	1/2	1 1/8	1 3/4	8-32 x 1/2	5	5.70
2ISCC-062-050KW	2ISCC062-050SKW	5/8	1/2	1 5/16	2	10-32 x 1/2	5	8.50
2ISCC-062-062KW	2ISCC062-062SKW	5/8	5/8	1 5/16	2	10-32 x 1/2	5	8.50
2ISCC-075-050KW	2ISCC075-050SKW	3/4	1/2	1 1/2	2 1/4	1/4-28 x 5/8	5	12.20
2ISCC-075-062KW	2ISCC075-062SKW	3/4	5/8	1 1/2	2 1/4	1/4-28 x 5/8	5	12.20
2ISCC-075-075KW	2ISCC075-075SKW	3/4	3/4	1 1/2	2 1/4	1/4-28 x 5/8	5	12.20
2ISCC-087-062KW	2ISCC087-062SKW	7/8	5/8	1 5/8	2 1/2	1/4-28 x 5/8	5	15.40
2ISCC-087-087KW	2ISCC087-087SKW	7/8	7/8	1 5/8	2 1/2	1/4-28 x 5/8	5	15.40
2ISCC-100-050KW	2ISCC100-050SKW	1	1/2	1 3/4	3	1/4-28 x 5/8	2	23.60
2ISCC-100-075KW	2ISCC100-075SKW	1	3/4	1 3/4	3	1/4-28 x 5/8	2	23.60
2ISCC-100-100KW	2ISCC100-100SKW	1	1	1 3/4	3	1/4-28 x 5/8	2	23.60
2ISCC-112-100KW	2ISCC112-100SKW	1 1/8	1	1 7/8	3 1/8	1/4-28 x 5/8	2	33.00
2ISCC-112-112KW	2ISCC112-112SKW	1 1/8	1 1/8	1 7/8	3 1/8	1/4-28 x 5/8	2	33.00
2ISCC-125-100KW	2ISCC125-100SKW	1 1/4	1	2 1/16	3 1/4	1/4-28 x 5/8	2	28.40
2ISCC-125-125KW	2ISCC125-125SKW	1 1/4	1 1/4	2 1/16	3 1/4	1/4-28 x 5/8	2	28.40
2ISCC-137-100KW	2ISCC137-100SKW	1 3/8	1	2 1/2	3 5/8	5/16-24 x 1	2	37.00
2ISCC-137-137KW	2ISCC137-137SKW	1 3/8	1 3/8	2 1/2	3 5/8	5/16-24 x 1	2	37.00
2ISCC-150-100KW	2ISCC150-100SKW	1 1/2	1	2 5/8	3 7/8	5/16-24 x 1	1	49.50
2ISCC-150-150KW	2ISCC150-150SKW	1 1/2	1 1/2	2 5/8	3 7/8	5/16-24 x 1	1	49.50
2ISCC-175-175KW	2ISCC175-175SKW	1 3/4	1 3/4	3 1/8	4 1/2	3/8-24 x 1	1	102.30
2ISCC-200-200KW	2ISCC200-200SKW	2	2	3 3/8	4 7/8	3/8-24 x 1	1	107.00