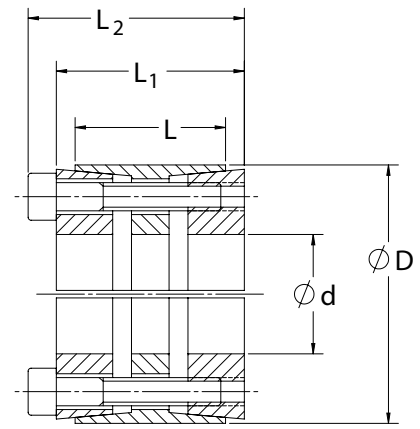




SERIES C405 LOCKING ASSEMBLY

- Heavy duty
- Wider design transmits higher torque and bending moments
- Excellent concentricity; extremely robust for the most demanding applications



Inch

CLIMAX Part No.	Shaft Size (in)	d	D	L	L ₁	L ₂	M _t (ft-lbs)	F _{ax} (lbs.F)	P _s (psi)	P _h (psi)	D _n *	Locking Screws		
												Qty.	Size	M _a (ft-lbs)
C405E-100	1	1.000	2.165	1.260	1.575	1.811	626	15,036	42,210	19,493	3.443	6	M6 x 35	13
C405E-112	1 1/8	1.125	2.165	1.260	1.575	1.811	705	15,036	37,520	19,493	3.443	6	M6 x 35	13
C405E-118	1 3/16	1.188	2.165	1.260	1.575	1.811	744	15,036	35,545	19,493	3.443	6	M6 x 35	13
C405E-125	1 1/4	1.250	2.362	1.732	2.126	2.362	914	17,542	27,809	14,715	3.317	7	M6 x 45	13
C405E-137	1 3/8	1.375	2.362	1.732	2.126	2.362	1,005	17,542	25,281	14,715	3.317	7	M6 x 45	13
C405E-143	1 7/16	1.438	2.362	1.732	2.126	2.362	1,051	17,542	24,182	14,715	3.317	7	M6 x 45	13
C405E-150	1 1/2	1.500	2.953	1.732	2.126	2.441	2,026	32,411	42,818	21,752	5.003	7	M8 x 45	30
C405E-162	1 5/8	1.625	2.953	1.732	2.126	2.441	2,195	32,411	39,524	21,752	5.003	7	M8 x 45	30
C405E-175	1 3/4	1.750	2.953	1.732	2.126	2.441	2,363	32,411	36,701	21,752	5.003	7	M8 x 45	30
C405E-187	1 7/8	1.875	3.150	2.205	2.598	2.913	2,894	37,041	30,251	18,009	4.812	8	M8 x 55	30
C405E-193	1 15/16	1.938	3.150	2.205	2.598	2.913	2,990	37,041	29,275	18,009	4.812	8	M8 x 55	30
C405E-200	2	2.000	3.150	2.205	2.598	2.913	3,087	37,041	28,360	18,009	4.812	8	M8 x 55	30
C405E-212	2 1/8	2.125	3.346	2.205	2.598	2.913	3,690	41,672	30,028	19,068	5.260	9	M8 x 55	30
C405E-218	2 3/16	2.188	3.346	2.205	2.598	2.913	3,798	41,672	29,170	19,068	5.260	9	M8 x 55	30
C405E-225	2 1/4	2.250	3.543	2.205	2.598	2.913	4,341	46,302	31,511	20,010	5.715	10	M8 x 55	30
C405E-237	2 3/8	2.375	3.543	2.205	2.598	2.913	4,582	46,302	29,853	20,010	5.715	10	M8 x 55	30
C405E-243	2 7/16	2.438	3.740	2.205	2.598	2.913	4,703	46,302	29,087	18,956	5.861	10	M8 x 55	30
C405E-250	2 1/2	2.500	3.740	2.205	2.598	2.913	4,823	46,302	28,360	18,956	5.861	10	M8 x 55	30
C405E-256	2 9/16	2.563	3.740	2.205	2.598	2.913	4,944	46,302	27,668	18,956	5.861	10	M8 x 55	30
C405E-262	2 5/8	2.625	4.331	2.756	3.150	3.543	8,313	76,008	34,837	21,116	7.205	10	M10 x 60	61
C405E-268	2 11/16	2.688	4.331	2.756	3.150	3.543	8,511	76,008	34,027	21,116	7.205	10	M10 x 60	61
C405E-275	2 3/4	2.750	4.331	2.756	3.150	3.543	8,709	76,008	33,254	21,116	7.205	10	M10 x 60	61
C405E-287	2 7/8	2.875	4.331	2.756	3.150	3.543	9,105	76,008	31,808	21,116	7.205	10	M10 x 60	61
C405E-293	2 15/16	2.938	4.724	2.756	3.150	3.543	10,233	83,609	34,244	21,292	7.900	11	M10 x 60	61
C405E-300	3	3.000	4.724	2.756	3.150	3.543	10,451	83,609	33,531	21,292	7.900	11	M10 x 60	61
C405E-312	3 1/8	3.125	4.724	2.756	3.150	3.543	10,887	83,609	32,190	21,292	7.900	11	M10 x 60	61
C405E-325	3 1/4	3.250	4.724	2.756	3.150	3.543	11,322	83,609	30,952	21,292	7.900	11	M10 x 60	61
C405E-337	3 3/8	3.375	5.118	2.756	3.150	3.543	12,826	91,209	32,515	21,441	8.595	12	M10 x 60	61
C405E-343	3 7/16	3.438	5.118	2.756	3.150	3.543	13,064	91,209	31,924	21,441	8.595	12	M10 x 60	61
C405E-350	3 1/2	3.500	5.118	2.756	3.150	3.543	13,301	91,209	31,354	21,441	8.595	12	M10 x 60	61
C405E-362	3 5/8	3.625	5.118	2.756	3.150	3.543	13,776	91,209	30,272	21,441	8.595	12	M10 x 60	61
C405E-375	3 3/4	3.750	5.709	3.543	4.016	4.488	19,510	124,865	32,049	21,053	9.481	11	M12 x 80	107
C405E-387	3 7/8	3.875	5.709	3.543	4.016	4.488	20,161	124,865	31,015	21,053	9.481	11	M12 x 80	107
C405E-393	3 15/16	3.938	5.709	3.543	4.016	4.488	20,486	124,865	30,523	21,053	9.481	11	M12 x 80	107
C405E-400	4	4.000	5.709	3.543	4.016	4.488	20,811	124,865	30,046	21,053	9.481	11	M12 x 80	107
C405E-425	4 1/4	4.250	6.102	3.543	4.016	4.488	24,122	136,217	30,849	21,485	10.261	12	M12 x 80	107
C405E-437	4 3/8	4.375	6.102	3.543	4.016	4.488	24,831	136,217	29,968	21,485	10.261	12	M12 x 80	107
C405E-443	4 7/16	4.438	6.496	3.543	4.016	4.488	29,384	158,920	34,470	23,547	11.612	14	M12 x 80	107
C405E-450	4 1/2	4.500	6.496	3.543	4.016	4.488	29,797	158,920	33,991	23,547	11.612	14	M12 x 80	107
C405E-475	4 3/4	4.750	6.496	3.543	4.016	4.488	31,453	158,920	32,202	23,547	11.612	14	M12 x 80	107
C405E-493	4 15/16	4.938	7.087	4.094	4.567	5.118	37,693	183,216	29,763	20,737	11.665	12	M14 x 90	170
C405E-500	5	5.000	7.087	4.094	4.567	5.118	38,170	183,216	29,391	20,737	11.665	12	M14 x 90	170
C405E-525	5 1/4	5.250	7.480	4.094	4.567	5.118	46,758	213,751	32,657	22,920	13.120	14	M14 x 90	170
C405E-543	5 7/16	5.438	7.480	4.094	4.567	5.118	48,428	213,751	31,531	22,920	13.120	14	M14 x 90	170
C405E-550	5 1/2	5.500	7.480	4.094	4.567	5.118	48,985	213,751	31,172	22,920	13.120	14	M14 x 90	170
C405E-575	5 3/4	5.750	7.874	4.094	4.567	5.118	54,869	229,019	31,947	23,329	13.982	15	M14 x 90	170
C405E-593	5 15/16	5.938	7.874	4.094	4.567	5.118	56,658	229,019	30,938	23,329	13.982	15	M14 x 90	170
C405E-600	6	6.000	8.268	4.094	4.567	5.118	61,072	244,287	32,657	23,699	14.848	16	M14 x 90	170
C405E-643	6 7/16	6.438	8.858	5.276	5.866	6.496	79,146	295,070	28,075	20,403	14.444	14	M16 x 110	262
C405E-650	6 1/2	6.500	8.858	5.276	5.866	6.496	79,915	295,070	27,805	20,403	14.444	14	M16 x 110	262
C405E-693	6 15/16	6.938	9.252	5.276	5.866	6.496	91,386	316,146	27,912	20,930	15.312	15	M16 x 110	262
C405E-700	7	7.000	9.252	5.276	5.866	6.496	92,209	316,146	27,663	20,930	15.312	15	M16 x 110	262
C405E-725	7 1/4	7.250	9.843	5.276	5.866	6.496	101,869	337,223	28,490	20,986	16.315	16	M16 x 110	262
C405E-743	7 7/16	7.438	9.843	5.276	5.866	6.496	104,504	337,223	27,772	20,986	16.315	16	M16 x 110	262
C405E-750	7 1/2	7.500	9.843	5.276	5.866	6.496	105,382	337,223	27,540	20,986	16.315	16	M16 x 110	262
C405E-775	7 3/4	7.750	10.236	5.276	5.866	6.496	108,895	337,223	26,652	20,178	16.587	16	M16 x 110	262
C405E-793	7 15/16	7.938	10.236	5.276	5.866	6.496	111,529	337,223	26,022	20,178	16.587	16	M16 x 110	262
C405E-800	8	8.000	10.236	5.276	5.866	6.496	112,408	337,223	25,819	20,178	16.587	16	M16 x 110	262

All dimensions are shown in inches unless stated otherwise. All dimensions and capacities are subject to change without notice.

* Minimum hub outside diameter based on a Pressure Reduction Factor of C=1.0 and hub material with tensile yield point ≥ 45,000 psi. For details refer to page 8.