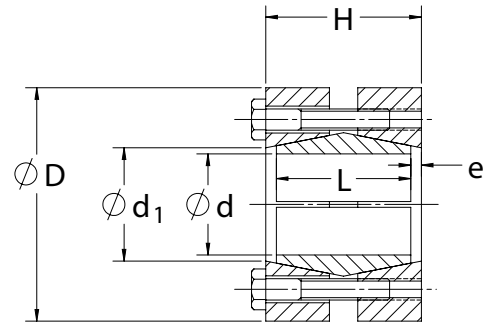




SERIES C600 KEYLESS RIGID COUPLINGS

- Cost effective shaft-to-shaft keyless connection
- High torque and bending moment capacity
- Preferred solution for torque-arm mounted hydraulic drives
- Available with stepped bore upon request



Inch

CLIMAX Part No.	Type	Shaft Size (in)	d	M _t (ft-lbs)	D	H	L	e	d ₁	Locking Screws		
										Qty.	Size	M _a (ft-lbs)
C600E-062	15	5/8	0.625	167	2.047	1.339	1.181	0.079	0.827	3	M6 x 30	9
C600E-068		11/16	0.69	184								
C600E-075		3/4	0.750	200								
C600E-081	20	13/16	0.8125	362	2.362	1.575	1.339	0.118	1.024	5	M6 x 35	9
C600E-087		7/8	0.875	390								
C600E-093		15/16	0.9375	418								
C600E-100	25	1	1.000	624	2.598	1.732	1.496	0.118	1.260	7	M6 x 35	9
C600E-106		1 1/16	1.0625	662								
C600E-112		1 1/8	1.125	701								
C600E-118	30	1 3/16	1.1875	846	2.992	1.890	1.654	0.118	1.496	8	M6 x 40	9
C600E-125		1 1/4	1.250	891								
C600E-137		1 3/8	1.375	980								
C600E-143	40	1 7/16	1.4375	1,721	3.780	2.205	1.969	0.118	1.850	7	M8 x 45	22
C600E-150		1 1/2	1.500	1,796								
C600E-162		1 5/8	1.625	1,946								
C600E-168		1 11/16	1.6875	2,021								
C600E-175		1 3/4	1.750	2,095								
C600E-187	50	1 7/8	1.875	3,207	4.409	2.676	2.362	0.157	2.283	10	M8 x 50	22
C600E-193		1 15/16	1.9375	3,314								
C600E-200		2	2.000	3,421								
C600E-212		2 1/8	2.125	3,635								
C600E-218	60	2 3/16	2.1875	4,490	4.724	3.071	2.756	0.157	2.598	12	M8 x 55	22
C600E-225		2 1/4	2.250	4,618								
C600E-237		2 3/8	2.375	4,875								
C600E-243		2 7/16	2.4375	5,003								
C600E-250		2 1/2	2.500	5,132								
C600E-256	70	2 9/16	2.5625	8,197	5.826	3.464	3.150	0.157	3.110	12	M10 x 65	44
C600E-262		2 5/8	2.625	8,397								
C600E-268		2 11/16	2.6875	8,597								
C600E-275		2 3/4	2.750	8,797								
C600E-287		2 7/8	2.875	9,197								
C600E-293	80	2 15/16	2.9375	11,357	6.693	4.095	3.701	0.197	3.701	10	M12 x 80	74
C600E-300		3	3.000	11,599								
C600E-312		3 1/8	3.125	12,082								
C600E-325		3 1/4	3.250	12,566								
C600E-337		3 3/8	3.375	13,049								
C600E-343	90	3 7/16	3.4375	15,949	7.283	4.567	4.173	0.197	4.094	12	M12 x 80	74
C600E-350		3 1/2	3.500	16,239								
C600E-362		3 5/8	3.625	16,819								
C600E-375		3 3/4	3.750	17,399								
C600E-387		3 7/8	3.875	17,979								
C600E-393	100	3 15/16	3.9375	22,836	7.756	4.960	4.488	0.236	4.488	15	M12 x 90	74
C600E-400		4	4.000	23,198								
C600E-425		4 1/4	4.250	24,648								

All dimensions are shown in inches unless stated otherwise. All dimensions and capacities are subject to change without notice.