

# EXPANDABLE METAL CABINETS **E SERIES**

**COXREELS® E Series "Expandable" multiple bank system is the pinnacle in professional appearance and organization.** The cabinets are interlocking and expandable to any number of spring driven reel assemblies required. Designed for easy installation, maintenance and servicing the E Series system is truly the professional's choice for multimedia delivery in one custom package.

## LOW PRESSURE

Models with hose are for air or water service with a maximum temperature 150° F. Models less hose can be used for air, water or oil.  
**Note: Do not exceed listed hose O.D. to obtain maximum length.**

HOSE							LESS HOSE		SIZE INDEX
MODEL	I.D.	O.D.	FT.	PSI	APRX. LBS.	AVAILABLE IN EZ-COIL	MODEL	APRX. LBS.	
<b>E-LP-330</b>	3/8"	5/8"	30	300	33	<b>EZ-E-LP-330</b>	<b>E-LPL-330</b>	29	<b>1</b>
<b>E-LP-350</b>	3/8"	5/8"	50	300	46	<b>EZ-E-LP-350</b>	<b>E-LPL-350</b>	40	<b>2</b>
<b>E-LP-430</b>	1/2"	3/4"	30	300	41	<b>EZ-E-LP-430</b>	<b>E-LPL-430</b>	36	<b>1</b>
<b>E-LP-450</b>	1/2"	3/4"	50	300	50	<b>EZ-E-LP-450</b>	<b>E-LPL-450</b>	42	<b>2</b>

To order EZ-Coil® equipped models less hose, please add prefix "EZ-"

## MEDIUM PRESSURE

Reels are furnished with standard one wire braid hose suitable for air, water or oil applications. Hose exceeds SAE R1 specifications. Maximum temperature 250° F. **Note: Do not exceed listed hose O.D. to obtain maximum length.**

HOSE							LESS HOSE		SIZE INDEX
MODEL	I.D.	O.D.	FT.	PSI	APRX. LBS.	AVAILABLE IN EZ-COIL	MODEL	APRX. LBS.	
<b>E-MP-330</b>	3/8"	5/8"	30	3000	47	<b>EZ-E-MP-330</b>	<b>E-MPL-330</b>	39	<b>1</b>
<b>E-MP-350</b>	3/8"	5/8"	50	3000	61	<b>EZ-E-MP-350</b>	<b>E-MPL-350</b>	49	<b>2</b>
<b>E-MP-430</b>	1/2"	3/4"	30	2500	47	<b>EZ-E-MP-430</b>	<b>E-MPL-430</b>	39	<b>1</b>
<b>E-MP-450</b>	1/2"	3/4"	50	2500	63	<b>EZ-E-MP-450</b>	<b>E-MPL-450</b>	49	<b>2</b>

To order EZ-Coil® equipped models less hose, please add prefix "EZ-"

## HIGH PRESSURE

Reels are furnished standard with S.A.E. 100R16 #1 or #2 wire braid hose suitable for grease and hydraulic oil applications. Maximum temp. 250° F. **Note: Do not exceed listed hose O.D. to obtain maximum length.**

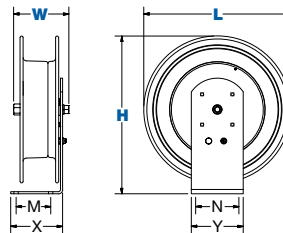
HOSE							LESS HOSE		SIZE INDEX
MODEL	I.D.	O.D.	FT.	PSI	APRX. LBS.	AVAILABLE IN EZ-COIL	MODEL	APRX. LBS.	
<b>E-HP-130</b>	1/4"	9/16"	30	5000	46	<b>EZ-E-HP-130</b>	<b>E-HPL-130</b>	39	<b>3</b>
<b>E-HP-150</b>	1/4"	9/16"	50	5000	60	<b>EZ-E-HP-150</b>	<b>E-HPL-150</b>	49	<b>4</b>
<b>E-HP-330</b>	3/8"	11/16"	30	4000	47	<b>EZ-E-HP-330</b>	<b>E-HPL-330</b>	39	<b>3</b>
<b>E-HP-350</b>	3/8"	11/16"	50	4000	61	<b>EZ-E-HP-350</b>	<b>E-HPL-350</b>	49	<b>4</b>

To order EZ-Coil® equipped models less hose, please add prefix "EZ-"

## REEL DIMENSIONS

Technical Data Sheets Available On Website

SIZE INDEX	W	H	L	X	Y	M	N
<b>1</b>	6 1/8"	18 1/4"	17 1/4"	6"	6"	4"	5"
<b>2</b>	8 3/4"	21"	19 5/8"	6"	6"	4"	5"
<b>3</b>	7"	18 1/4"	17 1/4"	6"	6"	4"	5"
<b>4</b>	9 1/4"	21"	19 5/8"	6"	6"	4"	5"



## COXREELS® ACCESSORY



### Cabinet

Length: 24 1/2" Width: 11 1/8" Height: 22 1/4"

- Unlimited expandability
- Easy to install
- Cabinet constructed of 14 gauge steel with 4-roller non-sag hose guide system for reduced hose wear
- All steel access panel
- Mounting bracket is 3/16" bent steel, fits 3" to 8 1/2" flange on "I" or "H" beam
- Easy access for connection of air, water, oil & grease

**METAL CABINET: #1796-2**  
Includes cabinet, access panel & mounting bracket. Weight: 45 lbs.

**END PANELS: #1798-1**  
Includes a set of two, all steel construction. Finished & caps the ends of each bank. Weight: 8 lbs.



Cabinet illustration (above) shows three reels, three metal cabinets, & one set of end panels

## E SERIES :: REEL SPECIFICATIONS

### SWIVEL

- External fluid path with machined from solid brass 90° full-flow NPT swivel inlet (Zinc plated steel swivel on HP models)
- Swivel Seals: NITRILE

### DESIGN & STRUCTURE

- Designed for expandable metal cabinets & multiple reel bank systems
- Solid one piece, heavy gauge 1/4" steel base & support post for maximum stability
- 1" solid steel axle & lubricated precision bearings for smooth rotation

### RETRACTION

- Controlled retraction speed up to 80% slower on EZ-COIL models :: See page 7 for details
- Enclosed factory tuned & matched cartridge-style spring motor
- Non corrosive stainless steel spring, pawl & zinc plated ratchet
- Multi-position lock ratchet mechanism secures hose at desired length

### SIGNATURE FEATURES

- Professional grade heavy duty steel construction
- Durable proprietary CPC™ powder coat process
- Rolled edges & ribbed discs provide strength & safety
- Leading 2-year manufacturer's limited warranty
- Made in the U.S.A. - Sold & Supported Worldwide

### POSSIBLE FIELDS OF APPLICATION

- Air/Water Services
- Pneumatic Tools
- Washdown
- Lubrication
- Chemical Fluid Transfer
- General Industrial
- Cabinet Mount
- Manufacturing Plants & Facilities
- Maintenance, Repair & Operations
- Automotive Dealerships
- Quick Lube Service Centers

### ACCESSORIZE YOUR REEL :: PG 50

- O-Rings & Swivels
- Mounting Cabinet
- Hoses
- Assorted Reel Accessories

