



E22 Key Switches and Accessories

Cutler-Hammer

Two-position key switches



Key Switches			
Part Number	Description	Price	Drawing Link
E22KB53A	Selector switch, black bezel, 2-position key, "OFF ON" with one N.O. contact block	\$101.00	PDF
E22KB62A	Selector switch, black bezel, 2-position key, spring from right "OFF ON" with one N.O. contact block	\$101.00	PDF

See specifications and mounting data at the beginning of this E22 series section.

Notes:

All E22 series key switches are keyed alike. The key is not compatible with the metal 22mm key switches.

All E22 series key switches will hold only one single row of (2) contacts (non-stackable).

Key can be removed in all positions.

Replacement contact blocks



[E22B1](#)



[E22B2](#)



[E22CB1M](#)

Replacement Contact Blocks			
Part Number	Description	Price	Drawing Link
E22B1*	One N.C. contact (Direct Opening Action)	\$19.50	PDF
E22B2	One N.O. contact	\$19.50	PDF
E22B11*	One N.O., One N.C. contact (N.C. Direct Opening Action)	\$35.00	PDF
E22B20	Two N.O. contacts	\$35.00	PDF
E22CB1M*	Self-monitoring contact block (N.C. Direct Opening Action)	\$45.00	PDF

Note: See contact electrical ratings on E22 series mounting and contact ratings page in this E22 series section.

*All N.C. contact blocks are EN 418 compliant when used with compliant operators.

E22 Accessories

Cutler-Hammer

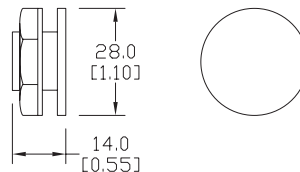
Octagonal wrench



Hole plug



Dimensions: mm [inches]



Bulb removal tool



Guard for E22 E-stop



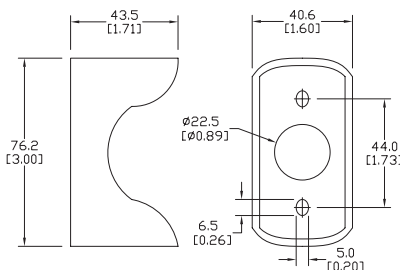
Replacement incandescent bulbs



Replacement LED lamps



Accessories		
Part number	Description	Price
<u>HT8WRENCH</u>	Octagonal wrench for tightening back-of-panel mounting nut on all Cutler-Hammer operators.	\$17.50
<u>E22BHP</u>	Hole plug for unused 22mm panel holes.	\$13.50
<u>HT8LAMPTOOL</u>	Lamp extraction tool for removing lamps from switches, indicators and stacklights	\$9.50
<u>E22MGTA</u>	22mm yellow guard for E22LTA2QB and E22LPB2B for emergency stop applications.	\$29.50



Replacement Incandescent Bulbs				
Part Number	Rating	Description	Quantity	Price
<u>ECX1900-5</u>	6V, 1.2 watts	6V replacement bulb for 22mm switches and indicators. Miniature bayonet base T31/4.	5	\$9.50
<u>ECX1902-5</u>	24V@ 80mA	24V replacement bulb for 22mm switches and indicators. Miniature bayonet base T31/4.	5	\$9.50
<u>ECX1904-5</u>	130V@20mA	120V replacement bulb for 22mm switches and indicators. Miniature bayonet base T31/4.	5	\$20.00
<u>W1121</u>	120V@20mA	Replacement bulb for Cutler-Hammer E22 full voltage indicators and switches. Does not replace the LED monoblock indicators.	4	\$36.00
<u>W1226</u>	60V@20mA	Replacement bulb for Cutler-Hammer E22 resistor indicators, switches and pushbuttons. Does not replace the LED monoblock indicators.	4	\$36.00
<u>W1819</u>	24V@20mA	Replacement bulb for Cutler-Hammer E22 indicators and pushbuttons. Does not replace the LED monoblock indicators.	4	\$36.00

Replacement LED Lamps					
Part Number	Color	Rating	Description	Quantity	Price
<u>ECX1911-2</u>	Red	24V@26mA	LED replacement lamp for miniature bayonet bases Works with 22mm switches and indicators, but illumination will not be as even when used with the ECX 22mm indicators Note: Will not replace sealed Cutler-Hammer monoblock LED indicators.	2	\$17.50
<u>ECX1912-2</u>	Green				\$22.00
<u>ECX1913-2</u>	Yellow				\$17.50
<u>ECX1914-2</u>	Blue				\$23.50
<u>ECX1915-2</u>	White				\$28.00
<u>ECX1921-2</u>	Red	120V@5mA			\$17.50
<u>ECX1922-2</u>	Green				\$22.00
<u>ECX1923-2</u>	Yellow				\$17.50
<u>ECX1924-2</u>	Blue				\$23.50
<u>ECX1925-2</u>	White				\$28.00

FATON E22 Legend Plates

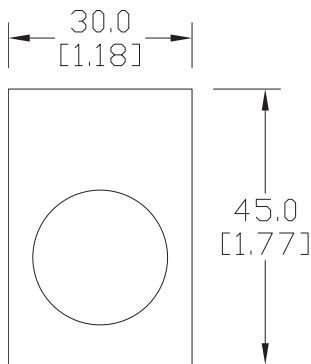
Cutler-Hammer

Legend plates

Aluminum legend plates feature a plastisol backing to help prevent rotation of the operator.



Dimensions: mm [inches]



E22VA8

Legend Plates				
Part Number	Price	Color	Legend	Drawing Link
E22NS11	\$7.25	Black	"CLOSE"	PDF
E22NS12	\$7.25	Black	"DOWN"	PDF
E22NS13	\$7.25	Red	"EMERG. STOP"	PDF
E22NS15	\$7.25	Black	"FORWARD"	PDF
E22NS19	\$7.25	Black	"JOG"	PDF
E22NS25	\$7.25	Black	"ON"	PDF
E22NS26	\$7.25	Black	"OPEN"	PDF
E22NS30	\$7.25	Black	"REVERSE"	PDF
E22NS31	\$7.25	Black	"RUN"	PDF
E22NS33	\$7.25	Black	"START"	PDF
E22NS34	\$7.25	Red	"STOP"	PDF
E22NS35	\$7.25	Black	"UP"	PDF
E22NS36	\$7.25	Black	Blank plate	PDF
E22NS37	\$7.25	Red	Blank plate	PDF
E22NS38	\$7.25	Black	"FOR-REV"	PDF
E22NS39	\$7.25	Black	"HAND-AUTO"	PDF
E22NS41	\$7.25	Black	"JOG-RUN"	PDF
E22NS42	\$7.25	Black	"OFF-ON"	PDF
E22NS43	\$7.25	Black	"OPEN-CLOSE"	PDF
E22NS48	\$7.25	Black	"UP-DOWN"	PDF
E22NS50	\$7.25	Black	"FOR-OFF-REV"	PDF
E22NS51	\$7.25	Black	"HAND-OFF-AUTO"	PDF
E22NS80	\$7.25	Black	"POWER ON"	PDF
E22NS81	\$7.25	Black	"MOTOR RUN"	PDF
E22NS82	\$7.25	Black	"MOTOR STOP"	PDF
E22NL36	\$7.25	Black	Jumbo alum. blank plate (1.57 in wide x 1.85 in tall)	PDF
E22NL37	\$7.25	Red	Jumbo alum. blank plate (1.57 in wide x 1.85 in tall)	PDF
E22NSP77	\$7.25	Red /black	Plastic blank plate; red on one side, black on other side; either side can have letters engraved down into white plastic	PDF
E22VA8	\$12.00	Yellow	"EMERGENCY STOP" oversize yellow legend plate, 2.76" (70mm), printed	N/A

NOTE: Legend plates also work with the GCX/ECX series 22mm metal switches. The removal of the locator tab on the legend plate is required. This is easily accomplished with a round file or small grinder.