



PTW and ETW-Series Torque Wrenches

Enerpac offers the following accessories to support a wide variety of applications in industries such as mining, power generation and oil and gas. For additional custom accessories not pictured here, please contact Enerpac.

PTW ETW Series

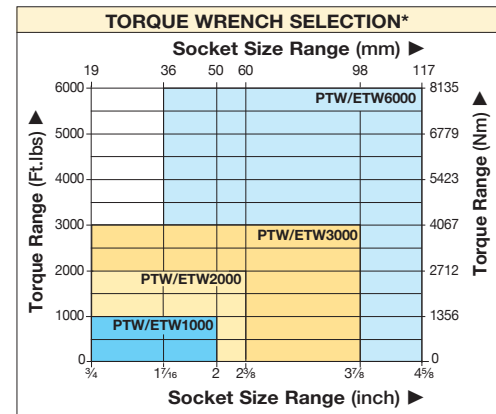
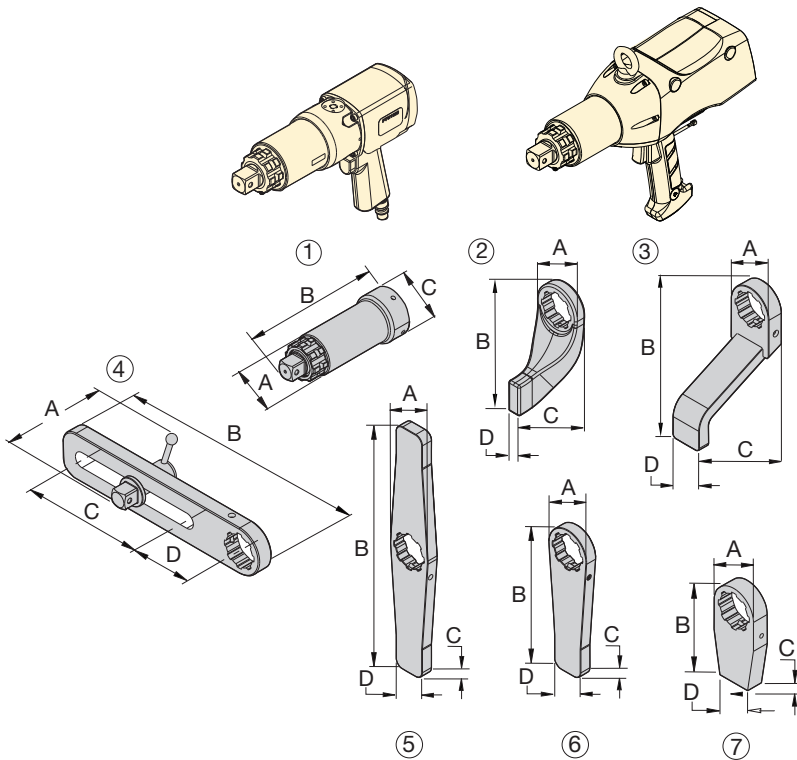


Nominal Output Torque:

6000 Ft.lbs

Square Drive Range:

1 - 1½ inch



BSH-Series Sockets

Heavy-Duty Impact Sockets for power driven torquing equipment. Details on www.enerpac.com.

Page: 10

| ▼ Optional accessories for use with PTW1000, ETW1000, PTW2000, ETW2000, PTW3000, ETW3000 models | | | | | | | |
|---|----------------------------------|-----------|---|----------------------|-------|------|------|
| No. | Description | Model No. | Application | Dimensions in inches | | | |
| | | | | A | B | C | D |
| 1 | Extended Drive, 6 inch (152 mm) | ED6TWS | Nose extension, primarily for truck wheel bolts | 2.44 | 8.11 | 2.87 | — |
| 1 | Extended Drive, 12 inch (305 mm) | ED12TWS | | 2.44 | 15.12 | 2.87 | — |
| 1 | Extended Drive, 18 inch (457 mm) | ED18TWS | | 2.44 | 20.12 | 2.87 | — |
| 2 | Standard Reaction Arm | RATWS | Standard arm included with PTW/ETW model | 2.99 | 6.77 | 4.02 | 0.83 |
| 3 | Extended Reaction Arm | ERATWS | Long plate for use with deep well sockets | 2.87 | 5.91 | 7.95 | 2.01 |
| 4 | Sliding Reaction Arm | SLRATWS | For widely spaced and uneven bolt centers | 4.41 | 15.00 | 7.99 | 4.02 |
| 5 | Double Straight Reaction Arm | DSATWS | Reduces time to reposition arm * | 2.87 | 15.98 | 0.75 | 4.02 |
| 6 | Straight Reaction Arm | SRATWS | Long plate for wide spaced reaction points | 2.87 | 9.45 | 0.75 | 2.01 |
| 7 | Blank Reaction Arm ** | BLTWS | Weldable blank for custom applications ** | 2.83 | 5.94 | 0.98 | 2.01 |
| ▼ For use with PTW6000, ETW6000 models | | | | | | | |
| 1 | Extended Drive 6 inch (152 mm) | ED6TWL | Nose extension, primarily for truck wheel bolts | 3.31 | 9.13 | 4.02 | — |
| 1 | Extended Drive 12 inch (305 mm) | ED12TWL | | 3.31 | 15.12 | 4.02 | — |
| 2 | Standard Reaction Arm | RATWL | Standard arm included with PTW/ETW model | 4.02 | 9.02 | 5.75 | 1.26 |
| 3 | Extended Reaction Arm | ERATWL | Long plate for use with deep well sockets | 4.02 | 10.00 | 7.24 | 2.52 |
| 4 | Sliding Reaction Arm | SLRATWL | For widely spaced and uneven bolt centers | 5.98 | 16.50 | 7.48 | 4.49 |
| 5 | Double Straight Arm | DSATWL | Reduces time to reposition arm * | 4.02 | 20.00 | 1.26 | 2.24 |
| 6 | Straight Reaction Arm | SRATWL | Long plate for wide spaced reaction points | 4.02 | 12.01 | 1.26 | 2.24 |
| 7 | Blank Reaction Arm ** | BLTWL | Weldable blank for custom applications ** | 4.02 | 5.98 | 1.26 | 2.24 |

* Time to reposition arm when repeatedly moving from tightening to loosening.

** **▲** WARNING: Blank reaction arms must be heat treated to HRc 38-42 prior to use.