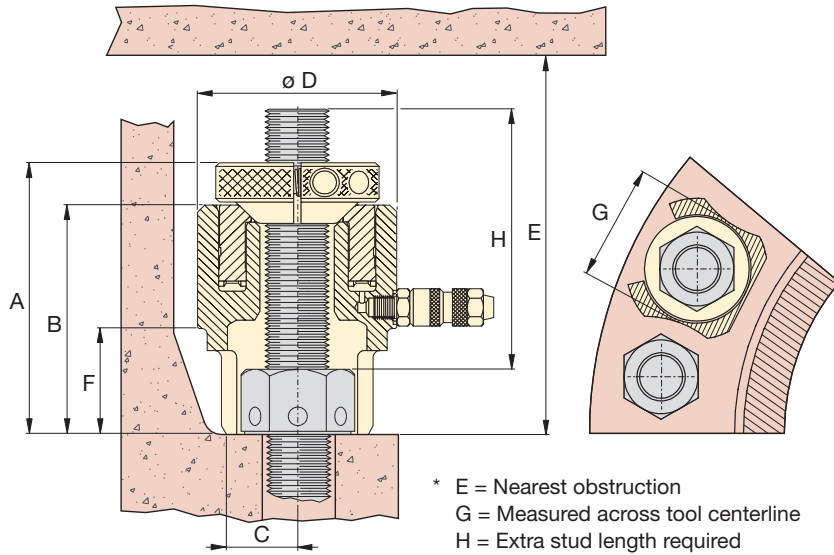


# Aquajack® Subsea Tensioners



## EAJ Series



Bolt Range:

**3/4" - 3 1/2" | M20 - M90**

Maximum Load Capacity:

**17.0- 260 US ton**

Maximum Operating Pressure:

**21,750 psi**

| Load Cell Model Number * | Thread Size    | Quick Fastening Nut Model Number | Cylinder Effective Area<br>(in <sup>2</sup> ) | Maximum Load Capacity<br>(ton) | Stroke<br>(in) | Dimensions<br>(in) |      |      |      |       |      |      |      | Tool Wt.<br>(lbs) |
|--------------------------|----------------|----------------------------------|---|--------------------------------|----------------|--------------------|------|------|------|-------|------|------|------|-------------------|
|                          |                |                                  |   |                                |                | A                  | B    | C    | D    | E*    | F    | G*   | H*   |                   |
| EAJ1LC                   | 3/4" - 10 UN   | EAJ1QFN0750U10                   | 1.56  | 17.0                           | 0.79           | 4.49               | 3.58 | 0.75 | 2.60 | 8.54  | 1.38 | 2.09 | 3.78 | 3.31              |
|                          | 7/8" - 9 UN    | EAJ1QFN0875U09                   |   |                                |                |                    |      |      |      |       |      |      |      |                   |
|                          | M20 x 2,5      | EAJ1QFNM02025                    |   |                                |                |                    |      |      |      |       |      |      |      |                   |
|                          | M22 x 2,5      | EAJ1QFNM02225                    |   |                                |                |                    |      |      |      |       |      |      |      |                   |
| EAJ2LC                   | 1" - 8 UN      | EAJ2QFN1000U08                   | 2.57  | 28.0                           | 1.18           | 5.79               | 4.72 | 0.98 | 3.23 | 11.38 | 1.97 | 2.44 | 4.92 | 6.61              |
|                          | M24 x 2,5      | EAJ2QFNM02425                    |   |                                |                |                    |      |      |      |       |      |      |      |                   |
|                          | M27 x 3,0      | EAJ2QFNM02730                    |   |                                |                |                    |      |      |      |       |      |      |      |                   |
|                          | 1 1/8" - 8 UN  | EAJ2QFN1125U08                   |   |                                |                |                    |      |      |      |       |      |      |      |                   |
| EAJ3LC                   | M30 x 3,5      | EAJ2QFNM03035                    | 3.91  | 42.6                           | 1.18           | 6.20               | 5.16 | 1.10 | 3.86 | 12.09 | 2.28 | 3.07 | 5.12 | 9.92              |
|                          | 1 1/4" 8 UN    | EAJ3QFN1250U08                   |   |                                |                |                    |      |      |      |       |      |      |      |                   |
|                          | M33 x 3,5      | EAJ3QFNM03335                    |   |                                |                |                    |      |      |      |       |      |      |      |                   |
|                          | 1 3/8" - 8 UN  | EAJ3QFN1375U08                   |   |                                |                |                    |      |      |      |       |      |      |      |                   |
| EAJ4LC                   | M36 x 3,5      | EAJ3QFNM03635                    | 5.71  | 62.2                           | 1.18           | 6.73               | 5.35 | 1.30 | 4.49 | 12.56 | 2.48 | 3.58 | 5.31 | 13.23             |
|                          | 1 1/2" - 8 UN  | EAJ4QFN1500U08                   |   |                                |                |                    |      |      |      |       |      |      |      |                   |
|                          | M39 x 4,0      | EAJ4QFNM03040                    |   |                                |                |                    |      |      |      |       |      |      |      |                   |
|                          | 1 5/8" - 8 UN  | EAJ4QFN1625U08                   |   |                                |                |                    |      |      |      |       |      |      |      |                   |
| EAJ5LC                   | M42 x 4,5      | EAJ4QFNM04245                    | 9.16  | 99.6                           | 1.18           | 7.24               | 5.75 | 1.57 | 7.60 | 13.46 | 2.76 | 4.49 | 5.51 | 19.84             |
|                          | 1 3/4" - 8 UN  | EAJ5QFN1750U08                   |   |                                |                |                    |      |      |      |       |      |      |      |                   |
|                          | M45 x 4,5      | EAJ5QFNM04545                    |   |                                |                |                    |      |      |      |       |      |      |      |                   |
|                          | 1 7/8" - 8 UN  | EAJ5QFN1875U08                   |   |                                |                |                    |      |      |      |       |      |      |      |                   |
|                          | M48 x 5,0      | EAJ5QFNM04850                    |   |                                |                |                    |      |      |      |       |      |      |      |                   |
| EAJ6LC                   | 2" - 8 UN      | EAJ5QFN2000U08                   | 12.88   | 140.2                          | 1.18           | 7.91               | 6.34 | 1.93 | 6.46 | 14.45 | 3.23 | 5.43 | 5.91 | 28.66             |
|                          | M52 x 5,0      | EAJ5QFNM05250                    |   |                                |                |                    |      |      |      |       |      |      |      |                   |
|                          | M56 x 5,5      | EAJ6QFNM05655                    |   |                                |                |                    |      |      |      |       |      |      |      |                   |
|                          | 2 1/4" - 8 UN  | EAJ6QFN2250U08                   |   |                                |                |                    |      |      |      |       |      |      |      |                   |
|                          | M60 x 5,5      | EAJ6QFNM06055                    |   |                                |                |                    |      |      |      |       |      |      |      |                   |
| EAJ7LC                   | 2 1/2" - 8 UN  | EAJ6QFN2500U08                   | 19.17   | 208.6                          | 1.18           | 9.06               | 7.01 | 2.95 | 7.56 | 15.75 | 3.74 | 6.06 | 6.50 | 41.89             |
|                          | M64 x 6,0      | EAJ6QFNM06460                    |   |                                |                |                    |      |      |      |       |      |      |      |                   |
|                          | M68 x 6,0      | EAJ7QFNM06860                    |   |                                |                |                    |      |      |      |       |      |      |      |                   |
|                          | 2 3/4" - 8 UN  | EAJ7QFN2750U08                   |   |                                |                |                    |      |      |      |       |      |      |      |                   |
| EAJ8LC                   | M72 x 6,0      | EAJ7QFNM07260                    | 23.98   | 260.9                          | 1.18           | 9.72               | 7.60 | 2.68 | 8.39 | 16.22 | 4.29 | 7.17 | 6.50 | 54.01             |
|                          | M76 x 6,0      | EAJ7QFNM07660                    |   |                                |                |                    |      |      |      |       |      |      |      |                   |
|                          | 3" - 8 UN      | EAJ7QFN3000U08                   |   |                                |                |                    |      |      |      |       |      |      |      |                   |
|                          | M80 x 6,0      | EAJ8QFNM08060                    |   |                                |                |                    |      |      |      |       |      |      |      |                   |
|                          | 3 1/4" - 8 UN  | EAJ8QFN3250U08                   |   |                                |                |                    |      |      |      |       |      |      |      |                   |
| M85 x 6,0                | EAJ8QFNM08560  |                                  |   |                                |                |                    |      |      |      |       |      |      |      |                   |
| M90 x 6,0                | EAJ8QFN3500U08 |                                  |   |                                |                |                    |      |      |      |       |      |      |      |                   |
| M90 x 6,0                | EAJ8QFNM09060  |                                  |   |                                |                |                    |      |      |      |       |      |      |      |                   |

\* Tommy Bar is included with Load Cell.