

# Tension Meter and Load Cells

▼ Shown: LH-102 and TM-5 (in middle)



## TM LH Series



Capacity:

**900 - 90.000 kg**

Accuracy, % of full scale:

**± 2%**



TM and LH models are 100% tested to verify accuracy within a ± 2% range.

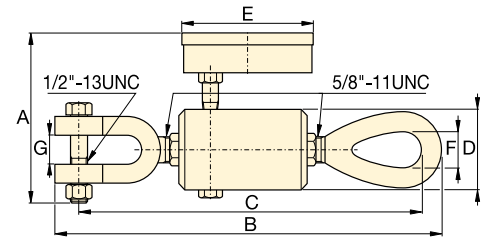
If your application requires a calibrated tool, it must be submitted for certification testing. Certification is NOT available from Enerpac.

### Tension Meter TM-5

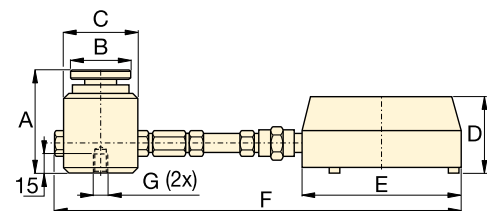
- Accuracy ± 2% of full scale
- Zinc and bronze plated to resist corrosion
- Dual-range readout in kilograms and pounds
- Maximum indicating pointer reading for pre-selected forces or to maintain force readings
- Cushioned metal case provides safe storage and transport.

### Load Cells LH-Series

- Accuracy ± 2% of full scale
- Swivel loading pad reduces eccentric loading for improved accuracy
- Maximum indicating pointer reading pre-selected forces or to maintain maximum force readings
- Dual-range readout in kilograms and pounds.



TM-5



LH-Series

### ▼ SELECTION CHART

Type	Gauge Capacity		Model Number	Minimum Reading		Gauge Scale Increments		Dimensions (mm)						
	(kg)	(lbs)		(kg)	(lbs)	(kg)	(lbs)	A	B	C	D	E	F	G*
Direct Mounted	4.500	10.000	<b>TM-5</b>	500	1.000	100	100	120	247	236	50	93	22	19
Direct Mounted Load Cell	900	2.000	<b>LH-10</b>	100	200	20	20	77	44	57	60	101	215	¼" - 20, 44,5 BC
	4.500	10.000	<b>LH-50</b>	500	1.000	100	100	77	44	57	60	101	215	¼" - 20, 44,5 BC
Remote Mounted with 0,6 m Hose	900	2.000	<b>LH-102</b>	100	200	20	20	77	44	57	60	147	846	¼" - 20, 44,5 BC
	4.500	10.000	<b>LH-502</b>	500	1.000	100	100	77	44	57	60	147	846	¼" - 20, 44,5 BC
	9.000	20.000	<b>LH-1002</b>	1.000	2.000	200	200	77	44	57	60	147	846	¼" - 20, 44,5 BC
Remote Mounted with 1,8 m Hose	21.000	50.000	<b>LH-2506</b>	3.000	5.000	500	500	101	69	85	60	147	2094	¾" - 24, 63 BC
	45.000	100.000	<b>LH-5006</b>	5.000	5.000	1.000	1.000	132	101	127	60	147	2135	¾" - 24, 89 BC
	90.000	200.000	<b>LH-10006</b>	10.000	10.000	1.000	2.500	158	127	158	60	147	2166	¾" - 24, 102 BC

\* BC = Bolt Circle