

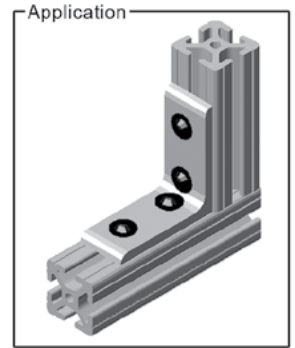
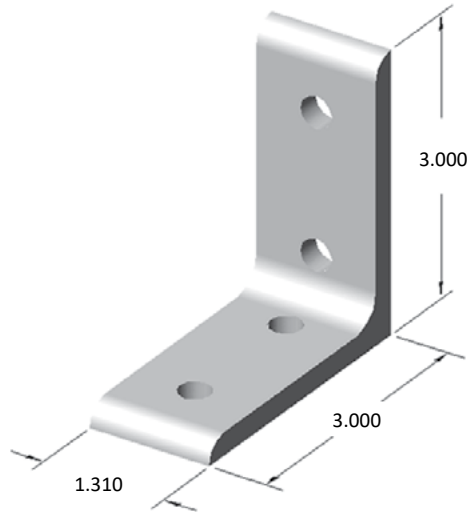
### 15CB4804

4 HOLE INSIDE CORNER BRACKET



**RECOMMENDED HARDWARE**

| QTY | DESCRIPTION           | PART NO. |
|-----|-----------------------|----------|
| 4   | 5/16-18 x 5/8 FBHSCS  | 13FA3331 |
| 4   | 5/16-18 ECONOMY T-NUT | 15FA3501 |



Part weight: .170 lbs

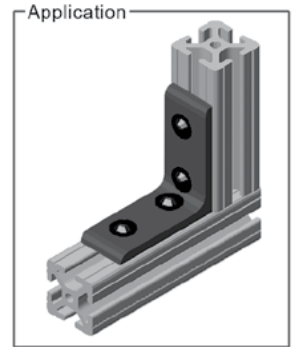
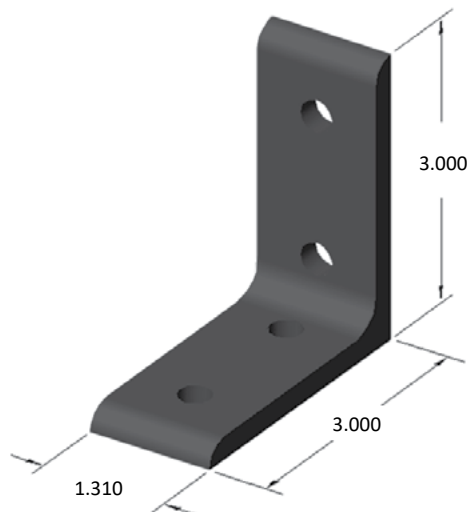
### 15CB4804-BLK

4 HOLE INSIDE CORNER BRACKET



**RECOMMENDED HARDWARE**

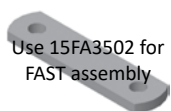
| QTY | DESCRIPTION           | PART NO. |
|-----|-----------------------|----------|
| 4   | 5/16-18 x 5/8 FBHSCS  | 13FA3331 |
| 4   | 5/16-18 ECONOMY T-NUT | 15FA3501 |



Part weight: .170 lbs

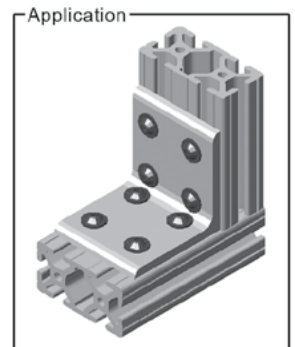
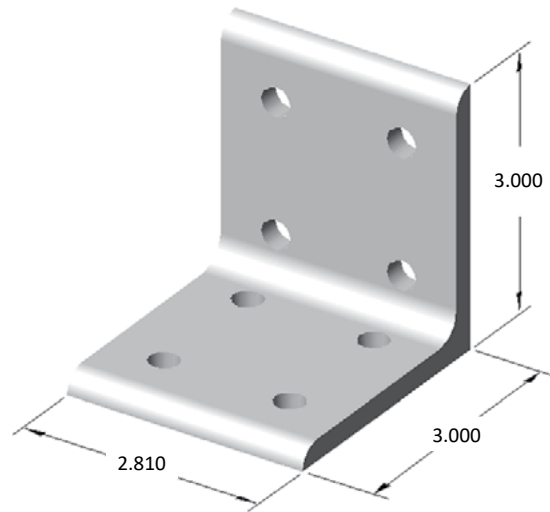
### 15CB4805

8 HOLE INSIDE CORNER BRACKET



**RECOMMENDED HARDWARE**

| QTY | DESCRIPTION           | PART NO. |
|-----|-----------------------|----------|
| 8   | 5/16-18 x 5/8 FBHSCS  | 13FA3331 |
| 8   | 5/16-18 ECONOMY T-NUT | 15FA3501 |



Part weight: .365 lbs