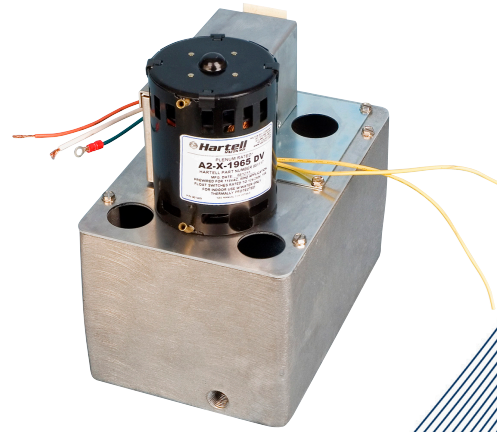


**SOLID CAST ALUMINUM**  
**Commercial Grade**  
**Condensate Pump**  
**PlenumPlus™ Model A2X-1965**

**DATA SHEET**



- ▲ UL 2043 Tested
- ▲ Plenum rated
- ▲ Easy wire access
- ▲ 115/230 dual voltage, thermally protected motor
- ▲ Solid cast aluminum reservoir
- ▲ Multiple piping arrangements
- ▲ Maintenance-free ball bearing design eliminates need for lubrication

The same great pump is now plenum rated. Hartell's PlenumPlus™ Commercial Grade A2X-1965 DV has been tested to, and yielded results that fell within the acceptable criteria of UL standard 2043, Third Edition, "Fire test for heat and visible smoke release for discrete products and their accessories installed in air-handling spaces." The UL standard 2043 rating assures the PlenumPlus pump is an optimal choice for use in plenum spaces.

FEATURES:

- ▲ 1 Gallon, heavy-duty, cast aluminum reservoir
- ▲ 400 Gallons per hour max and 20 foot shut off lift
- ▲ Four outlet options: (3) 1 1/4" top inlets and (1) 3/4" fnpt at bottom of reservoir
- ▲ Maximum temperature 150 degrees
- ▲ Auxiliary safety switch
- ▲ 1 year warranty

**PLENUM  
RATED**



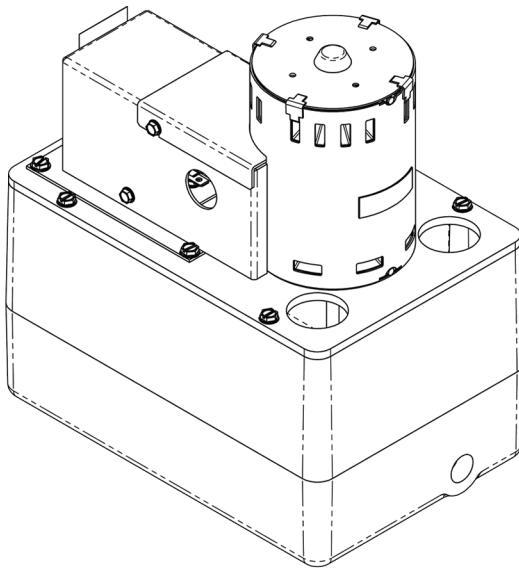
Voltage 60 HZ	Full Load AMPS	Gallons/Liters				Feet/Meters				Dimensions			Weight
		Lift/Feet	4'	8'	12'	20'	Width	Length	Height				
115/230	3.5 or 1.7A	Gallons Per Hr	390	300	240	0	6"	9"	10"	14lb			
		Lift/Meters	1.2m	2.4m	3.7m	6m	15.24cm	22.86cm	25.4cm	6.35kg			
		Liters Per Hour	1476.3	1135.6	908	0							

**When safety counts, you can rely on Hartell PlenumPlus™**

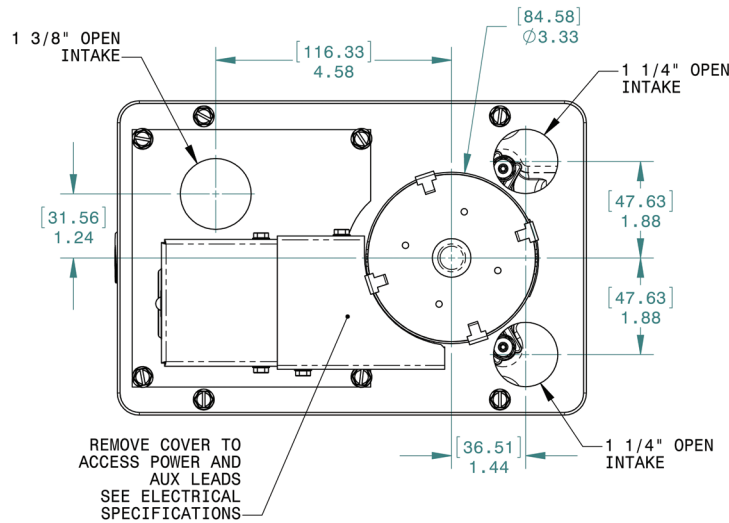
# DATA SHEET

## SOLID CAST ALUMINUM Commercial Grade Condensate Pump

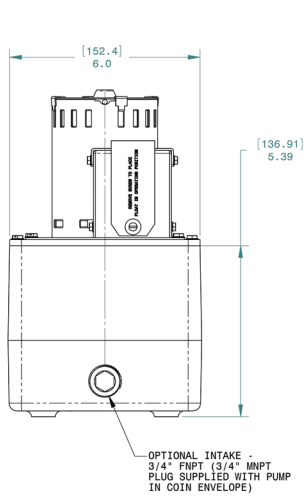
### PlenumPlus™ Model A2X-1965



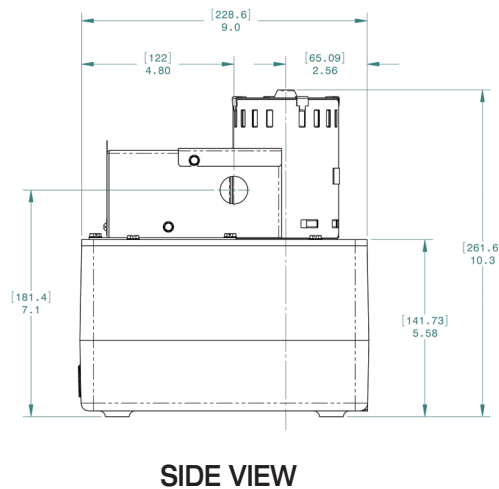
**PLENUM  
RATED**



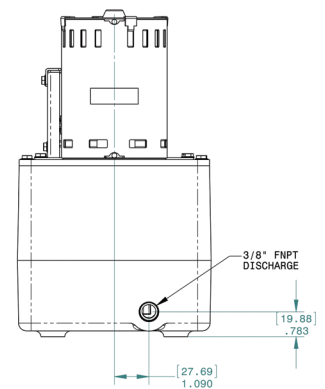
TOP VIEW



OPTIONAL INLET END VIEW



SIDE VIEW



DISCHARGE END VIEW