

## Fully integrated Rebar Detector with Data Storage

Automatic collection of data and real time visualization of rebars to increase efficiency on the construction site

### The Need for Data Storage

Manually recording the measurements of a test series is a time consuming business that can be an unnecessary source of errors. The various data storage modes of the Profoscope<sup>+</sup> make note taking obsolete. The cordless Profoscope<sup>+</sup> is ideally suited for one-handed operation, keeping the other hand free for marking rebars. The combination of the unique midpoint detection algorithm and the integration of the new memory function allows the fastest possible measuring performance at an affordable price.

### ProfoLink

#### Data Analysis made simple

Data exchange can be done easily by connecting the Profoscope<sup>+</sup> directly to the USB-port of the PC or by reading out the integrated Micro SD memory card. The included Windows based software ProfoLink allows the user to comfortably download, edit and present the data measured by the Profoscope<sup>+</sup>. The most common international units and rebar dimensions are supported, and converting the data is straightforward. All data can be exported either in graphic format or as a text file to third party applications.

### Benefits to the Customer

**All in one solution;** Economical instrument combining rebar detector and covermeter with an intuitive operator interface.

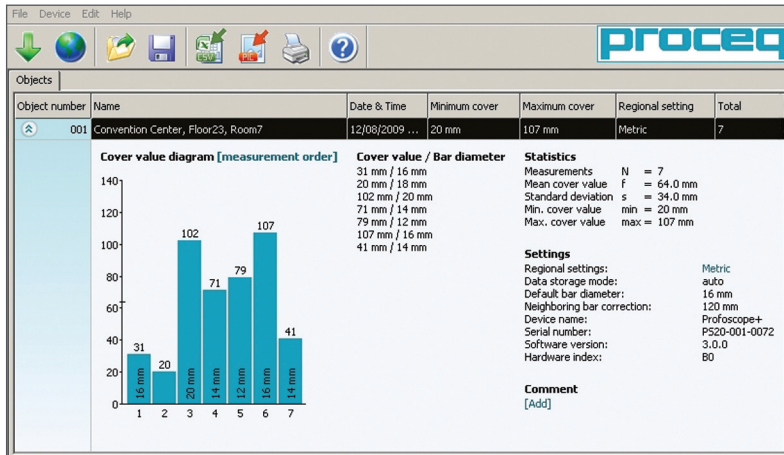
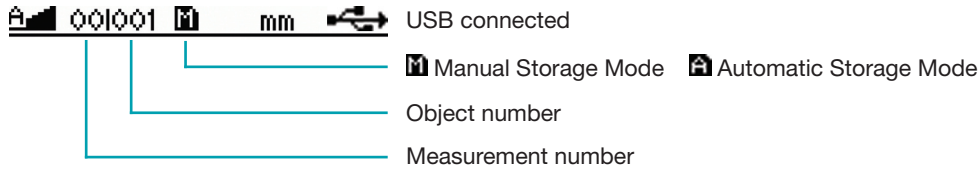
**Ease of use;** The innovative and widely accepted real time visualization of the Profoscope merged with a new and simple to use memory function for data acquisition.

**Memory functions;** Two different modes of operation are supported: Manual data storage allows the user to save concrete cover and rebar diameter on individually chosen measuring spots. Automatic data storage is especially designed for surface scans. Every time a rebar is detected, the cover value is stored automatically.

**Data export and analysis;** The ProfoLink software offered by Proceq is a professional tool to make clear assessments of the results.

**Durability;** Sealed housing for use in rough environment with replaceable protection cover for long lasting performance, over a wide temperature range.

## Memory Function and Profolink



The graphic display of the Profoscope<sup>+</sup> shows all necessary information while acquiring data on site.

The collected measurement values can then be analyzed comfortably with the Profolink PC tool.

## Technical Information

Measuring performance and technical information are identical to the Profoscope
<b>Data Storage</b>
49'500 measurements total (500 objects with 99 measurements)
Compatibility Profolink: Windows 2000, XP, Vista, 7

## Ordering Information

Unit	HC-2983A
	Profoscope <sup>+</sup> unit consisting of:  Profoscope <sup>+</sup> incl. start-up test kit and accessories (batteries, memory card, USB-cable, canvas bag, carrying strap, chalk, documentation, Profolink software)

## Accessories

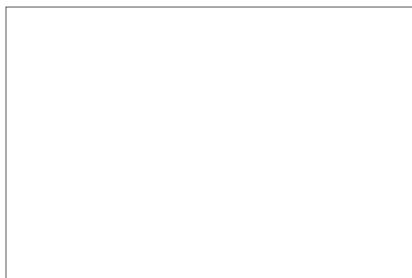
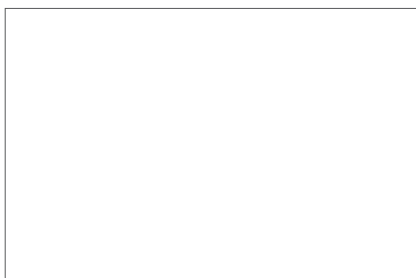
Standard Accessories delivered with the Profoscope <sup>+</sup>	
391 80 100	Canvas bag
350 74 025	Battery type AA
391 80 110	Carrying strap
391 80 803	USB cable type A-mini B
391 80 111	Memory card microSD, 2GB
391 80 112	CD incl. Profolink
Optional Accessories	
391 10 121S	Self-adhesive protection covers (Set of 3)
390 00 270	Calibration test block
325 34 018S	Chalk (Set of 10)

## Service & Warranty Information

Proceq is committed to providing complete support for the Profoscope<sup>+</sup> by means of our global service and support facilities. Furthermore, each Profoscope<sup>+</sup> is backed by the standard Proceq 2-year warranty and extended warranty options. Please check the Profoscope Sales Flyer for further details or [www.proceq.com](http://www.proceq.com).

Subject to change without notice.

All information contained in this documentation is presented in good faith and believed to be correct. Proceq SA makes no warranties and excludes all liability as to the completeness and/or accuracy of the information. For the use and application of any product manufactured and/or sold by Proceq SA explicit reference is made to the particular applicable operating instructions.



1.800.544.7220  
[www.humboldtmg.com](http://www.humboldtmg.com)