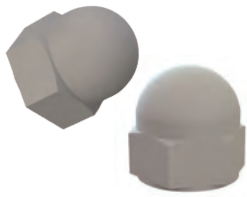




PLASTIC NUTS

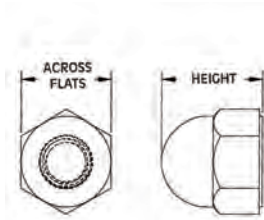
05CN Series
Cap Nuts

Specifications:

- Material: UL94 V-2 Nylon 6/6
- Acetal available by special order
- Color: See Table

Features:

- Encloses external thread
- Gives a finished appearance

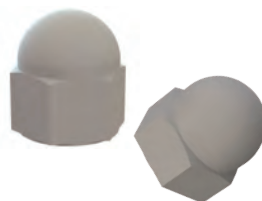


Imperial

Item No.		Thread	Across Flats		Height		Bulk Pack Qty
Natural	Black		in	mm	in	mm	
0500440CN	0500440CNB	#4-40	0.250	6.4	0.280	7.1	1000
0500632CN	0500632CNB	#6-32	0.305	7.8	0.345	8.8	1000
0500832CN	0500832CNB	#8-32	0.330	8.4	0.375	9.5	1000
0501024CN	0501024CNB	#10-24	0.365	9.3	0.400	10.2	1000
0501032CN	0501032CNB	#10-32	0.365	9.3	0.400	10.2	1000
0525018CN	0525018CNB	1/4-18	0.750	19.1	0.810	20.6	500
0525020CN	0525020CNB	1/4-20	0.425	10.8	0.475	12.1	500
0525028CN	0525028CNB	1/4-28	0.425	10.8	0.475	12.1	500
0531218CN	0531218CNB	5/16-18	0.500	12.7	0.530	13.5	500
0531224CN	0531224CNB	5/16-24	0.500	12.7	0.530	13.5	500
0537516CN	0537516CNB	3/8-16	0.565	14.4	0.620	15.7	1000
0537524CN	0537524CNB	3/8-24	0.565	14.4	0.620	15.7	1000
0537532CN	0537532CNB	3/8-32	0.565	14.4	0.620	15.7	500
0543714CN	0543714CNB	7/16-14	0.750	19.1	0.810	20.6	500
0550013CN	0550013CNB	1/2-13	0.750	19.1	0.810	20.6	500
0550020CN	0550020CNB	1/2-20	0.750	19.1	0.810	20.6	500
0562511CN	0562511CNB	5/8-11	0.935	23.8	0.970	24.6	250

Metric

Item No.	Thread	Across Flats		Height	Bulk Pack Qty
		mm		mm	
05M040070CN	M4 x 0.7	7.0		8.0	1000
05M050080CN	M5 x 0.8	8.0		10.0	1000
05M060100CN	M6 x 1.00	10.0		12.0	1000
05M080125CN	M8 x 1.25	13.0		15.0	1000
05M100150CN	M10 x 1.50	17.0		18.0	500
05M120175CN	M12 x 1.75	18.9		20.5	500
05M160200CN	M16 x 2.0	23.7		24.8	250
05M200250CN	M20 x 2.5	26.7		29.1	1000

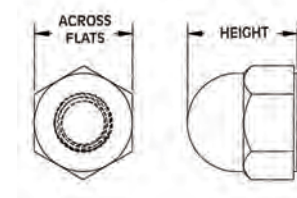
05LCN Series
Locking Cap Nut

Specifications:

- Material: UL94 V-2 Nylon 6/6
- Acetal available by special order
- Color: See Table

Features:

- Molded-in locking thread for applications which require higher torque or a more secure assembly



Imperial

Item No.		Thread	Across Flats		Height		Bulk Pack Qty
Natural	Black		in	mm	in	mm	
0500440LCN	0500440LCNB	#4-40	0.250	6.4	0.280	7.1	500
0500632LCN	0500632LCNB	#6-32	0.305	7.8	0.345	8.8	500
0500832LCN	0500832LCNB	#8-32	0.330	8.4	0.375	9.5	500
0501024LCN	0501024LCNB	#10-24	0.365	9.3	0.400	10.2	500
0501032LCN	0501032LCNB	#10-32	0.365	9.3	0.400	10.2	500
0525020LCN	0525020LCNB	1/4-20	0.425	10.8	0.475	12.1	500
0531218LCN	0531218LCNB	5/16-18	0.500	12.7	0.530	13.5	500
0537516LCN	0537516LCNB	3/8-16	0.565	14.3	0.620	15.7	500

Metric

Item No.	Thread	Across Flats		Height	Bulk Pack Qty
		mm		mm	
05M040070LCN	M4 x 0.7	7.0		8.0	1000
05M050080LCN	M5 x 0.8	8.0		10.0	1000
05M060100LCN	M6 x 1.0	10.0		12.0	1000