



Schedule 80 CPVC Industrial Products & Accessories
 True Union 2000 Standard Retrofit Ball Valves - Replaces Other Brand Valves & True Union 2000 Standard Retrofit Ball Valves -
 Replaces Spears® "Regular Style" Valves

True Union 2000 Standard Retrofit Ball Valves - Replaces Other Brand Valves



Standard Valve

Complete universal replacement valve for domestic and import CPVC valve. See separate catalog listing for retrofit replacement of older Spears® valves.

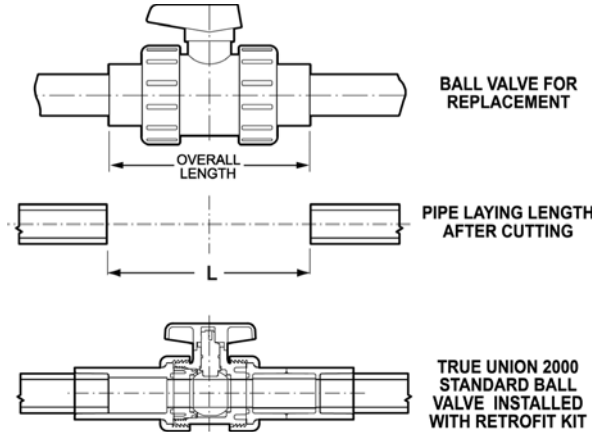
Retrofit valve consists of Spears® Standard True Union 2000 Ball Valve supplied with factory installed extended-socket end connectors. Simply cut out old valve to specified dimensions and install Retrofit Valve end connectors.

Pressure Rating @ 73°F (23°C), Water
 1/2" - 2" 235 psi
 2-1/2" - 4" 150 psi

All Valves Assembled with Silicone-Free, Water Soluble Lubricant.

Suitable for Vacuum Service.

Retrofit End Connector Sets without valve are also available - See Ball Valve Accessories & Repair Kits



Size	1/2	3/4	1	1-1/4	1-1/2	2	2-1/2	3	4
L	4-29/32	5-7/16	6-3/32	7-1/4	7-1/2	8-17/32	10-3/4	11-7/16	14-15/16

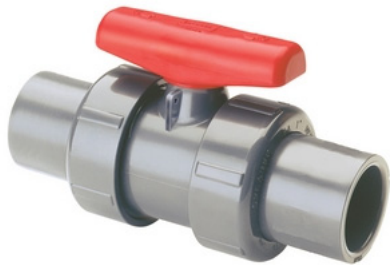
CPVC - Socket Ends

Size	EPDM	Viton®	Std Pk	Mstr Pk	Disc Code
1/2	3622R-005C 49.86	3632R-005C 55.44	1	18	610
3/4	3622R-007C 62.82	3632R-007C 69.82	1	12	610
1	3622R-010C 74.79	3632R-010C 83.10	1	8	610
1-1/4	3622R-012C 118.90	3632R-012C 132.15	1	8	610
1-1/2	3622R-015C 125.55	3632R-015C 139.51	1	8	610

CPVC - Socket Ends (continued)

Size	EPDM	Viton®	Std Pk	Mstr Pk	Disc Code
2	3622R-020C 167.94	3632R-020C 193.05	1	4	610
2-1/2	3622R-025C 376.49	3632R-025C 418.30	1	0	611
3	3622R-030C 440.22	3632R-030C 489.16	1	0	611
4	3622R-040C 797.68	3632R-040C 886.31	1	0	611

True Union 2000 Standard Retrofit Ball Valves - Replaces Spears® "Regular Style" Valves



Standard Valve

Complete replacement valve for older Spears® 2300 Series Regular True Union Ball Valves. See separate catalog listing for replacement of other brand valves.

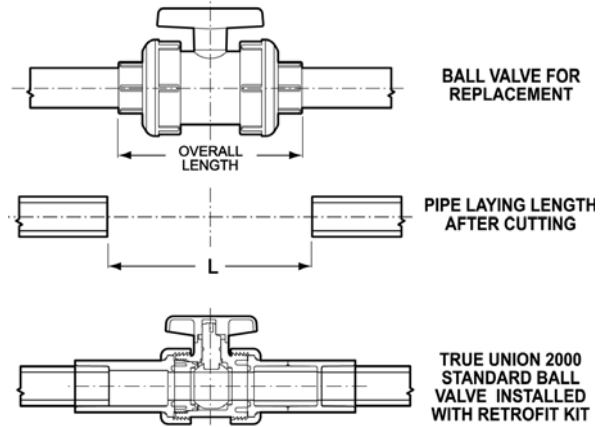
Retrofit valve consists of Spears® Standard True Union 2000 Ball Valve supplied with factory installed extended-socket end connectors. Simply cut out old valve to specified dimensions and install Retrofit Valve end connectors.

Pressure Rating @ 73°F (23°C), Water
 1/2" - 2" 235 psi
 2-1/2" - 4" 150 psi

All Valves Assembled with Silicone-Free, Water Soluble Lubricant

Suitable for Vacuum Service

Retrofit End Connector Sets without valve are also available - See Ball Valve Accessories & Repair Kits



Size	1/2	3/4	1	1-1/4	1-1/2	2	2-1/2	3	4
L	5-5/16	6-1/4	6-11/16	7-1/8	8-3/16	8-15/16	12	12-1/16	13-3/16

CPVC - Socket Ends

Size	EPDM	Viton®	Std Pk	Mstr Pk	Disc Code
1/2	3622RS-005C 49.86	3632RS-005C 55.44	1	18	610
3/4	3622RS-007C 62.82	3632RS-007C 69.82	1	18	610
1	3622RS-010C 74.79	3632RS-010C 83.10	1	12	610
1-1/4	3622RS-012C 118.90	3632RS-012C 132.15	1	8	610

CPVC - Socket Ends (continued)

Size	EPDM	Viton®	Std Pk	Mstr Pk	Disc Code
1-1/2	3622RS-015C 125.55	3632RS-015C 139.51	1	8	610
2	3622RS-020C 167.94	3632RS-020C 193.05	1	4	610
2-1/2	3622RS-025C 376.49	3632RS-025C 418.30	1	0	611
3	3622RS-030C 440.22	3632RS-030C 489.16	1	0	611

Thermoplastic Valves
 True Union 2000 Standard Retrofit Ball Valves - Replaces Spears® "Regular Style" Valves & True Union Ball Valves (Regular Style)



True Union 2000 Standard Retrofit Ball Valves - Replaces Spears® "Regular Style" Valves



Standard Valve

Complete replacement valve for older Spears® 2300 Series Regular True Union Ball Valves. See separate catalog listing for replacement of other brand valves.

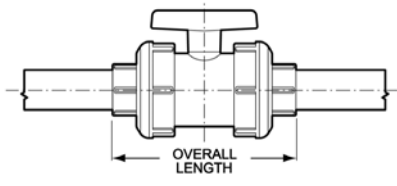
Retrofit valve consists of Spears® Standard True Union 2000 Ball Valve supplied with factory installed extended-socket end connectors. Simply cut out old valve to specified dimensions and install Retrofit Valve end connectors.

Pressure Rating @ 73°F (23°C), Water
 1/2" - 2" 235 psi
 2-1/2" - 4" 150 psi

All Valves Assembled with Silicone-Free, Water Soluble Lubricant

Suitable for Vacuum Service

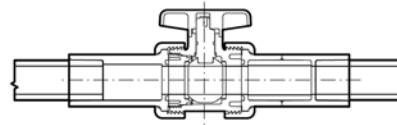
Retrofit End Connector Sets without valve are also available - See Ball Valve Accessories & Repair Kits



BALL VALVE FOR REPLACEMENT



PIPE LAYING LENGTH AFTER CUTTING



TRUE UNION 2000 STANDARD BALL VALVE INSTALLED WITH RETROFIT KIT

Size	1/2	3/4	1	1-1/4	1-1/2	2	2-1/2	3	4
L	5-5/16	6-1/4	6-11/16	7-1/8	8-3/16	8-15/16	12	12-1/16	13-3/16

PVC - Socket Ends

Size	EPDM	Viton®	Std Pk	Mstr Pk	Disc Code
1/2	3622RS-005 37.78	3632RS-005 42.02	1	18	608
3/4	3622RS-007 44.68	3632RS-007 49.70	1	18	608
1	3622RS-010 53.22	3632RS-010 59.28	1	12	608
1-1/4	3622RS-012 73.61	3632RS-012 93.96	1	8	608
1-1/2	3622RS-015 88.68	3632RS-015 98.44	1	8	608
2	3622RS-020 117.02	3632RS-020 128.84	1	4	608
2-1/2	3622RS-025 224.15	3632RS-025 304.76	1	0	609
3	3622RS-030 296.53	3632RS-030 329.47	1	0	609
4	3622RS-040 500.87	3632RS-040 556.71	1	0	609

CPVC - Socket Ends

Size	EPDM	Viton®	Std Pk	Mstr Pk	Disc Code
1/2	3622RS-005C 49.86	3632RS-005C 55.44	1	18	610
3/4	3622RS-007C 62.82	3632RS-007C 69.82	1	18	610
1	3622RS-010C 74.79	3632RS-010C 83.10	1	12	610
1-1/4	3622RS-012C 118.90	3632RS-012C 132.15	1	8	610
1-1/2	3622RS-015C 125.55	3632RS-015C 139.51	1	8	610
2	3622RS-020C 167.94	3632RS-020C 193.05	1	4	610
2-1/2	3622RS-025C 376.49	3632RS-025C 418.30	1	0	611
3	3622RS-030C 440.22	3632RS-030C 489.16	1	0	611
4	3622RS-040C 797.68	3632RS-040C 886.31	1	0	611

True Union Ball Valves (Regular Style)



Socket/Threaded Style



Flanged Style

Pressure Rating @ 73°F (23°C), Water
 1/2" - 2" 235 psi
 2-1/2" - 6" 150 psi
 Flanged 150 psi
 Maximum Service Temperature
 PVC = 140°F (60°C)
 CPVC = 200°F (93°C)
 Temperature/Pressure De-ratings Apply
 Rated for Vacuum Service
 All Valves assembled with Silicone-Free, Water Soluble Lubricant.

6" Venturied Valves are 4" Ball Valves equipped with 4x6 End Connectors.

PVC

Size	EPDM	Viton®	Std Pk	Mstr Pk	Disc Code
1/2	2329-005 54.37	2339-005 60.50	1	18	230
3/4	2329-007 64.31	2339-007 71.57	1	12	230
1	2329-010 76.61	2339-010 85.33	1	8	230

Socket & Threaded Ends

PVC (continued)

Size	EPDM	Viton®	Std Pk	Mstr Pk	Disc Code
1-1/4	2329-012 105.97	2339-012 135.26	1	8	230
1-1/2	2329-015 127.68	2339-015 141.70	1	8	230
2	2329-020 168.44	2339-020 185.49	1	4	230

Socket & Threaded Ends