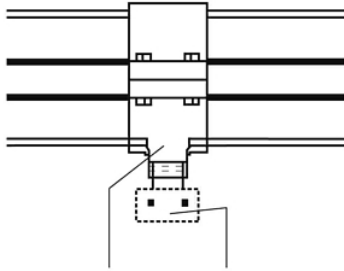


Double Containment Clamp-on Saddles for Leak Detection Sensors



Leak Detection Sensor Saddles are special devices which can be installed on the Containment system where a "low-point" is desired for leak detection apparatus. Spears® Clamp-on style saddles feature an internal O-ring seal to allow easy installation anywhere on the containment piping. Saddles may also be used in Containment high points for air relief or for connection of Containment drainage valves (see note below). See *Double Containment Design & Installation Guide* for proper installation.

PVC White Clamp-On Saddle x SR Thread

Part Number	Size	Hole Saw Dia	Std Pk	Mstr Ctn	Disc Code	Price Each
-------------	------	--------------	--------	----------	-----------	------------

with EPDM O-ring Seal & SS Hardware

2"-4" 235, 6" 200, 8"-12" 150 psi @ 73°F (23°C)

467SE-247SR	2X1/2	3/4	1	10	046	50.84
467SE-248SR	2X3/4	7/8	1	10	046	50.84
467SE-333SR ¹	3X1/2	7/8	1	10	046	68.23
467SE-334SR	3X3/4	7/8	1	10	046	68.23
467SE-415SR ¹	4X1/2	1-1/8	1	10	046	85.61
467SE-416SR ¹	4X3/4	1-1/8	1	10	046	85.61
467SE-523SR ¹	6X1/2	1-1/8	1	4	046	143.86
467SE-524SR ¹	6X3/4	1-1/8	1	4	046	143.86
467SE-573SR ¹	8X1/2	4	1	0	046	206.39
467SE-574SR ¹	8X3/4	4	1	0	046	206.39

¹-Outlet Sized with Adapter

PVC White Saddles with Viton® O-ring seals available by special order

PVC Gray Clamp-On Saddle x SR Thread

Part Number	Size	Hole Saw Dia	Std Pk	Mstr Ctn	Disc Code	Price Each
-------------	------	--------------	--------	----------	-----------	------------

with EPDM O-ring Seal & SS Hardware

2"-4" 235, 6" 200, 8"-12" 150 psi @ 73°F (23°C)

867S-247SR	2X1/2	3/4	1	10	086	54.88
867S-248SR	2X3/4	7/8	1	10	086	54.88
867S-333SR ¹	3X1/2	7/8	1	10	086	73.79
867S-334SR	3X3/4	7/8	1	10	086	73.79
867S-415SR ¹	4X1/2	1-1/8	1	10	086	92.90
867S-416SR ¹	4X3/4	1-1/8	1	10	086	92.90
867S-523SR ¹	6X1/2	1-1/8	1	4	086	134.30
867S-524SR ¹	6X3/4	1-1/8	1	4	086	134.30
867S-573SR ¹	8X1/2	4	1	0	086	249.03
867S-574SR ¹	8X3/4	4	1	0	086	249.03

¹-Outlet sized with Adapter

PVC Gray Clamp-On Saddle x SR Thread

Part Number	Size	Hole Saw Dia	Std Pk	Mstr Ctn	Disc Code	Price Each
-------------	------	--------------	--------	----------	-----------	------------

with Viton® O-ring Seal & SS Hardware

2"-4" 235, 6" 200, 8"-12" 150 psi @ 73°F (23°C)

867SV-247SR	2X1/2	3/4	1	10	086	61.41
867SV-248SR	2X3/4	7/8	1	10	086	61.41
867SV-333SR ¹	3X1/2	7/8	1	10	086	82.10
867SV-334SR	3X3/4	7/8	1	10	086	82.10
867SV-415SR ¹	4X1/2	1-1/8	1	10	086	103.66
867SV-416SR ¹	4X3/4	1-1/8	1	10	086	103.66
867SV-523SR ¹	6X1/2	1-1/8	1	4	086	152.26
867SV-524SR ¹	6X3/4	1-1/8	1	4	086	152.26
867SV-573SR ¹	8X1/2	4	1	0	086	272.10
867SV-574SR ¹	8X3/4	4	1	0	086	272.10

Made in the U.S.A.

Clamp-on Saddle Specifications, Containment sizes 2" - 8":

Material: PVC White/PVC Gray/CPVC
 Seals: EPDM/Viton®
 Hardware: Stainless Steel (no fluid contact)
 Outlet: Special Reinforced (SR) Female Plastic thread
 1/2" or 3/4" NPT (see note below)
 PR, Water: 235 psi @ 73°F (23°C), 2" - 4"
 200 psi @ 73°F (23°C), 6"
 150 psi @ 73°F (23°C), 8"

Maximum Service Temperature
 PVC = 140°F (60°C)
 CPVC = 200°F (93°C)

Temperature/Pressure De-ratings Apply

Note: Saddles specified in this catalog are for listed containment pipe sizes through 8", with 1/2" or 3/4" NPT connections. For a wide variety of additional pipe and outlet sizes, including solvent weld outlets, please refer to Spears® *PVC/CPVC Clamp-On & Hot-Tap Saddles*.

PVC Gray Clamp-On Saddle x SR Thread (continued)

Part Number	Size	Hole Saw Dia	Std Pk	Mstr Ctn	Disc Code	Price Each
-------------	------	--------------	--------	----------	-----------	------------

with Viton® O-ring Seal & SS Hardware

¹-Outlet sized with Adapter

CPVC Gray Clamp-On Saddle x SR Thread

Part Number	Size	Hole Saw Dia	Std Pk	Mstr Ctn	Disc Code	Price Each
-------------	------	--------------	--------	----------	-----------	------------

with EPDM O-ring Seal & SS Hardware

2"-4" 235, 6" 200, 8"-12" 150 psi @ 73°F (23°C)

867S-247CSR	2X1/2	3/4	1	10	096	91.91
867S-248CSR	2X3/4	7/8	1	10	096	91.91
867S-333CSR ¹	3X1/2	7/8	1	10	096	123.03
867S-334CSR	3X3/4	7/8	1	10	096	123.03
867S-415CSR ¹	4X1/2	1-1/8	1	10	096	154.84
867S-416CSR ¹	4X3/4	1-1/8	1	10	096	154.84
867S-523CSR ¹	6X1/2	1-1/8	1	4	096	258.07
867S-524CSR ¹	6X3/4	1-1/8	1	4	096	258.07
867S-573CSR	8X1/2	4	1	0	096	458.47
867S-574CSR ¹	8X3/4	4	1	0	096	458.47

¹-Outlet sized with Adapter

with Viton® O-ring Seal & SS Hardware

2"-4" 235, 6" 200, 8"-12" 150 psi @ 73°F (23°C)

867SV-247CSR	2X1/2	3/4	1	10	096	102.33
867SV-248CSR	2X3/4	7/8	1	10	096	102.33
867SV-333CSR ¹	3X1/2	7/8	1	10	096	137.47
867SV-334CSR	3X3/4	7/8	1	10	096	137.47
867SV-415CSR ¹	4X1/2	1-1/8	1	10	096	173.69
867SV-416CSR ¹	4X3/4	1-1/8	1	10	096	173.69
867SV-523CSR ¹	6X1/2	1-1/8	1	4	096	289.48
867SV-524CSR ¹	6X3/4	1-1/8	1	4	096	289.48
867SV-573CSR ¹	8X1/2	4	1	0	096	498.68
867SV-574CSR ¹	8X3/4	4	1	0	096	498.68

¹-Outlet sized with Adapter