

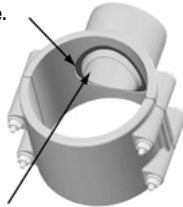


**Schedule 80 CPVC Industrial Products & Accessories
Clamp-On & Hot-Tap Saddles**

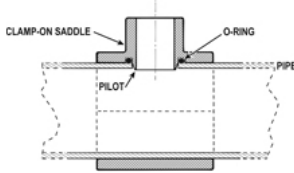
**Spears® Two-Piece Clamp-On Saddle Design Clamps onto Pipe
for Quick and Easy Installation**



O-ring seal provides positive, trouble-free sealing to pipe.

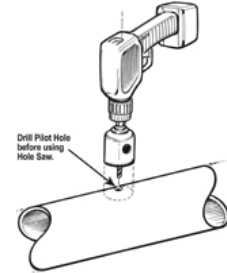


Special pilot engages with hole in pipe to prevent saddle dislocation.



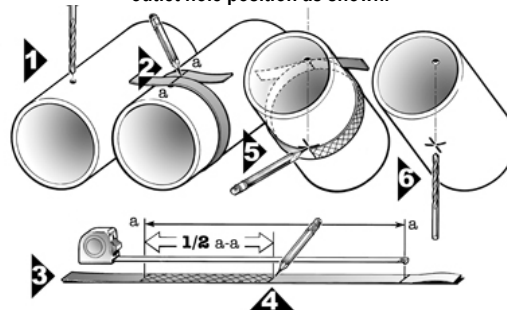
**Clamp-On Saddle
Installation Instructions**

- Using a standard industrial grade hole-saw, cut specified hole in desired position on pipe according to recommended hole saw size engraved on the saddle. Note: Care must be taken to deburr hole and remove all residue from hole area to assure tight fit and avoid leakage.
- Fully seat O-ring in groove on underside of saddle outlet component. Position over hole and fully seat saddle onto pipe. Note: Certain saddle outlets are piloted. Be sure pilot lip fully engages with hole in pipe.
- Place strap component opposite outlet and secure with bolts (4), nuts (4) and washers (8). Important: Washers MUST be placed under each bolt head (1) and under each nut (1) to avoid damage to saddle.
- Tighten bolts to specified torque.



Saddle Size	2	3	4	6 & up
Recommended Bolt-Torque - ft/lb	8	8	8	10

For Double Outlet Saddle Installation — Determine second outlet hole position as shown.



Spears® Hot-Tap Saddles Designed for Adding Branch Connections to Piping Systems Under Live (“Hot”) Pressure

Hot-Tap Saddle branch outlets are either 3/4" socket (with 1" Spigot O.D.) or 1-1/2" socket (with 2" Spigot O.D.) in saddle sizes 2" through 6" to fit IPS pipe using a built-in O-ring seal. Internal cutter is operated using conventional ratchet and drive extension and permanently retains coupon cut from pipe. Maximum operating pressure at 73°F (23°C) is 235 psi for saddle sizes 2" - 4", 200 psi for 6" saddles and 150 psi for 8" saddles. See packaged Installation Instructions for details.

Part Number	Size	Hole Saw Dia	Std Pk	Mstr Ctn	Disc Code	Price Each
-------------	------	--------------	--------	----------	-----------	------------

CPVC Gray Clamp-On Saddle x Soc Single Outlet

with Viton® O-ring Seal & Zinc-Plated Hardware

2" - 4" 235, 6" 200, 8"-12" 150 psi @ 73°F (23°C)

866V-247C	2X1/2	3/4	1	10	096	53.86
866V-248C	2X3/4	7/8	1	10	096	53.86
866V-249C	2X1	1-1/8	1	10	096	53.86
866V-250C	2X1-1/4	1-1/2	1	10	096	53.86
866V-251C	2X1-1/2	1-1/2	1	10	096	53.86
866V-291C	2-1/2X1-1/2	1-3/4	1	10	096	74.84
866V-333C ¹	3X1/2	7/8	1	10	096	74.84
866V-334C	3X3/4	7/8	1	10	096	74.84
866V-335C	3X1	1-1/8	1	10	096	74.84
866V-336C ¹	3X1-1/4	2-1/4	1	10	096	74.84
866V-337C ¹	3X1-1/2	2-1/4	1	10	096	74.84
866V-338C	3X2	2-1/4	1	10	096	74.84



Part Number	Size	Hole Saw Dia	Std Pk	Mstr Ctn	Disc Code	Price Each
-------------	------	--------------	--------	----------	-----------	------------

CPVC Gray Clamp-On Saddle x Soc Single Outlet (continued)

with Viton® O-ring Seal & Zinc-Plated Hardware

866V-415C ¹	4X1/2	1-1/8	1	10	096	89.95
866V-416C ¹	4X3/4	1-1/8	1	10	096	89.95
866V-417C	4X1	1-1/8	1	8	096	89.95
866V-418C ¹	4X1-1/4	1-3/4	1	8	096	89.95
866V-419C	4X1-1/2	1-3/4	1	8	096	89.95
866V-420C	4X2	2-1/4	1	8	096	89.95
866V-421C ¹	4X2-1/2	3	1	4	096	96.57
866V-422C	4X3	3	1	4	096	105.29
866V-523C ¹	6X1/2	1-1/8	1	4	096	149.94
866V-524C ¹	6X3/4	1-1/8	1	4	096	149.94
866V-525C	6X1	1-1/8	1	4	096	149.94
866V-526C ¹	6X1-1/4	2-1/4	1	4	096	149.94
866V-527C ¹	6X1-1/2	2-1/4	1	4	096	149.94
866V-528C	6X2	2-1/4	1	4	096	149.94