



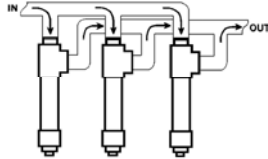
Turf & Irrigation Filters

Specially designed for agricultural and irrigation applications. Suitable for any application where cool, filtered water is required. Standard units utilize an internal-to-external filter cartridge. See following page for reverse flow (external to internal) filters.



- 200 psi Working Pressure Non-Shock @ 73°F (23°C)
- Filter Body is made from NSF®-PW Approved PVC Material
- Optional Screen Meshes
- Compact Design, Easy to Clean
- Lightweight, Easy to Install
- Filter Screens are designed using a standard perforated Stainless Steel Screen
- Mesh Sizes include an inner Stainless Steel Cloth with Spring Support (external cloth on reverse flow filters)
- Pressure loss: 100 GPM – 3 psi 50 GPM – 1.25 psi
- May be bushed to required pipe size

- When more than 100 gpm is required, filters may be installed in parallel
- When installing filter, allow space for removing filter screen for cleaning
- Remove stainless steel filter screen before solvent welding filter to pipe manifold
- When filters are installed in the direct sun, it is suggested the filter body be coated with a water-base latex paint having a high reflectance
- Installation in a shaded area is preferred



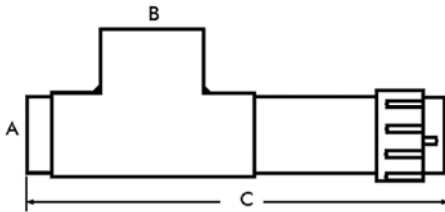
—CAUTION—

- WATER HAMMER MAY CAUSE SEVERE DAMAGE TO THE FILTER ASSEMBLY.
- BACK FLUSHING IS NOT RECOMMENDED.
- QUALITY GRADE THREAD SEALANT IS RECOMMENDED FOR ALL THREADED PVC CONNECTIONS.

Mesh Size	Hole Size (in.)	Part Number Extension
1/16" Holes	.0625	-16
1/32" Holes	.0312	-32
50 Mesh	.0117	-50
76 Mesh	.0095	-76
100 Mesh	.0059	-100
150 Mesh	.0041	-150
200 Mesh	.0029	-200

Additional Mesh Sizes available on request.

Filter Dimensions & Weights



Series	A Inlet		B Outlet	C Overall Length	Screen Length	Filter Approx. Weight
	Socket	Spigot				
FLR	2-1/2	3	4	28	24	8
MFLR	2-1/2	3	4	16	12	4-3/4

Filter Assembly with Stainless Steel Screen

Part Number	Size	Std Pk	Mstr Ctn	Disc Code	Price Each
100 GPM					
FL-16*	2-1/2 /3 x 4	1	0	020	527.35
FL-32*	2-1/2 /3 x 4	1	0	020	539.34
FL-50	2-1/2 /3 x 4	1	0	020	611.23
FL-76	2-1/2 /3 x 4	1	0	020	738.28
FL-100	2-1/2 /3 x 4	1	0	020	671.16
FL-150	2-1/2 /3 x 4	1	0	020	695.15
FL-200	2-1/2 /3 x 4	1	0	020	755.07

*Standard FL-16 and FL-32 can be utilized as Reverse Flow Filters by reversing installation from current inlet to outlet and current outlet to inlet.

NOTE: Filter Assemblies are furnished standard with a 1-1/4" IPS tapped cap (FL4a) for use with a valve, or may be plugged off (plug not furnished). Optional cap available with 1/4" IPS tapping for use with a pressure gauge — specify FL-5a when ordering.

50 GPM

Part Number	Size	Std Pk	Mstr Ctn	Disc Code	Price Each
MFL-16*	2-1/2 /3 x 2	1	0	020	443.48
MFL-32*	2-1/2 /3 x 2	1	0	020	450.65
MFL-50	2-1/2 /3 x 2	1	0	020	465.01
MFL-76	2-1/2 /3 x 2	1	0	020	563.33
MFL-100	2-1/2 /3 x 2	1	0	020	491.41
MFL-150	2-1/2 /3 x 2	1	0	020	515.37
MFL-200	2-1/2 /3 x 2	1	0	020	575.29

*Standard FL-16 and FL-32 can be utilized as Reverse Flow Filters by reversing installation from current inlet to outlet and current outlet to inlet.

NOTE: Filter Assemblies are furnished standard with a 1-1/4" IPS tapped cap (FL4a) for use with a valve, or may be plugged off (plug not furnished). Optional cap available with 1/4" IPS tapping for use with a pressure gauge — specify FL-5a when ordering.

Filter Replacement Screens

Part Number	Size	Std Pk	Mstr Ctn	Disc Code	Price Each
100 GPM (24" Length)					
FL-16-1	1/16" Holes	3	0	020	210.94
FL-32-1	1/32" Holes	3	0	020	230.11

Filter Replacement Screens (continued)

Part Number	Size	Std Pk	Mstr Ctn	Disc Code	Price Each
100 GPM (24" Length)					
FL-50-1	50 Mesh	3	0	020	455.45
FL-76-1	76 Mesh	3	0	020	450.65
FL-100-1	100 Mesh	3	0	020	354.78
FL-150-1	150 Mesh	3	0	020	383.52
FL-200-1	200 Mesh	3	0	020	474.62

NOTE: When ordering replacement screens for FL and MFL Series Filters, please provide exact length of old screen within 1/64" to ensure proper fit of new screen in your filter body.

50 GPM (12" Length)

Part Number	Size	Std Pk	Mstr Ctn	Disc Code	Price Each
MFL-16-1	1/16" Holes	3	0	020	210.94
MFL-32-1	1/32" Holes	3	0	020	220.53
MFL-50-1	50 Mesh	3	0	020	239.71
MFL-76-1	76 Mesh	3	0	020	340.38
MFL-100-1	100 Mesh	3	0	020	263.69
MFL-150-1	150 Mesh	3	0	020	292.46
MFL-200-1	200 Mesh	3	0	020	359.54

NOTE: When ordering replacement screens for FL and MFL Series Filters, please provide exact length of old screen within 1/64" to ensure proper fit of new screen in your filter body.

Filter Replacement Components

Part Number	Size	Std Pk	Mstr Ctn	Disc Code	Price Each
100 GPM Filter Body					
FL-11	2-1/2 /3 X 4	1	0	020	359.54
50 GPM Filter Body					
MFL-11	2-1/2 /3 X 2	1	0	020	275.66
Components for Old-Style Filters w/3" Bottom Cap					
Filter Cap w/Gasket					
FL-4A	3X1-1/4	1	70	020	29.97