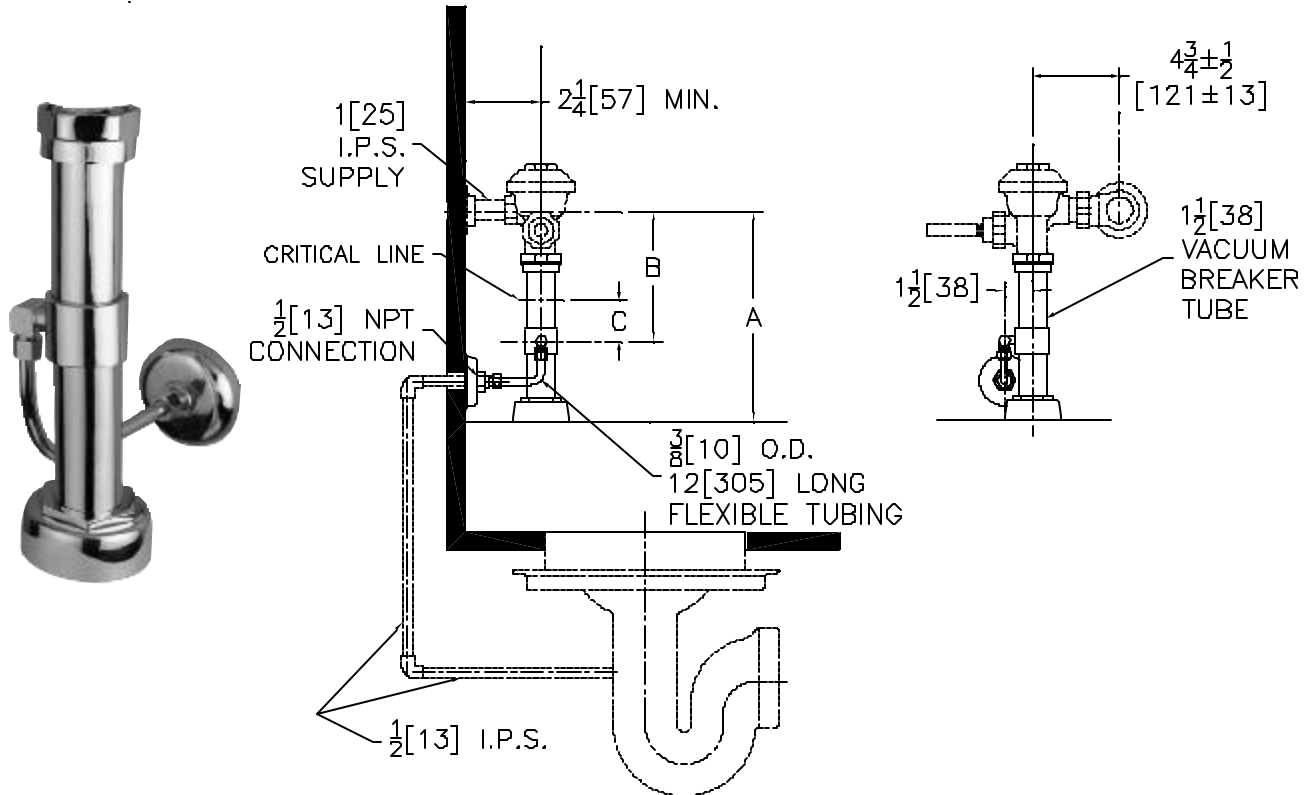




Aquaflush®

TAG _____

Exposed P6000-TPO Model Trap Primer Assembly



Suffix Options (Check/Specify Appropriate Options)

- _____ -YH One Wall Bumper
- _____ -YJ Split Ring Pipe Support
- _____ -YK Solid Ring Pipe Support
- _____ -YL Solid Ring Pipe Support with Bumper
- _____ -YN Bumper on Flush Pipe
- _____ Other

Complies with ASSE 1018 certification.

ENGINEERING SPECIFICATION: ZURN P6000-TPO

Aquaflush Trap Primer Assembly- The Aquaflush trap primer elbow assembly provides a source of water to maintain a constant water seal in floor drains preventing sewer gases from entering a specific area. During each flush valve actuation, a small amount of water is diverted to the floor drain to help maintain the water seal. The Trap Primer Assembly is furnished complete with 1-1/2"[38] flush tube with trap primer collar, spud coupling and flange for top spud connection, 3/8" x 12" supply tube and fittings, vacuum breaker, vacuum breaker tube nut and wall escutcheon.

Product No.	A		B		C	
	In.	MM.	In.	MM.	In.	MM.
P6000-TPO	11 1/2	292	7 1/8	181	2 3/8	60
P6000-1-TPO	16	406	11 3/8	289	6 3/8	162
P6000-2-TPO	24	610				
P6000-3-TPO	27	686				
Longer Lengths As Specified						

This space is for Architectural/engineering Approval

ZURN INDUSTRIES, INC. " COMMERCIAL BRASS OPERATION " 5900 ELWIN BUCHANAN DRIVE " SANFORD NC 27330

Phone: 1-800-997-3876 " Fax: 919-775-3541 " World Wide Web: www.zurn.com

In Canada: ZURN INDUSTRIES LIMITED " 3544 Nashua Drive " Mississauga, Ontario L4V1L2 " Phone: 905-405-8272 Fax: 905-405-1292